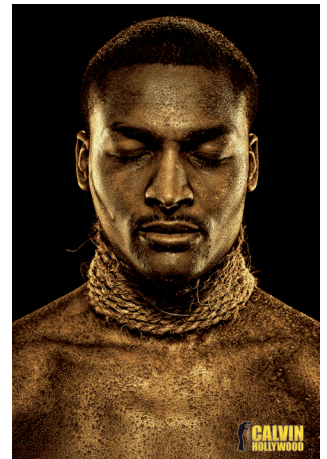


## PRODUCT DATASHEET

# ISG250 Iridium Silver Gloss

### Technical data:

|           |                      |
|-----------|----------------------|
| Weight    | 250 g/m <sup>2</sup> |
| Thickness | 260 μ                |
| Opacity   | 97 %                 |
| Storage   | 15-30 °C (40-60% RH) |



### Description:

The ISG250 is a glossy, silver-metallised photo paper with unique Iridium-like surface and extremely high resolution for professional Photographers and ambitious Hobby Photographers. The unique metallised character especially appears in motives like industrial, automobile or jewel photography or wherever chrome, steel, gold or silver is in the spotlight.

### Sizes

| Sheets                 | Rolls                 | Core  |
|------------------------|-----------------------|-------|
| 10 x 15 (102 x 152 mm) | 25,4 cm x 15 m (10")  | 3" *) |
| 13 x 18 (127 x 178 mm) | 32,9 cm x 15 m (13")  | 3" *) |
| 15 x 20 (152 x 203 mm) | 43,2 cm x 15 m (17")  | 3" *) |
| DIN A4 (210 x 297 mm)  | 61,0 cm x 15 m (24")  | 3" *) |
| DIN A3 (297 x 420 mm)  | 91,4 cm x 15 m (36")  | 3" *) |
| DIN A3+ (330 x 483 mm) | 106,7 cm x 15 m (42") | 3" *) |
| DIN A2 (420 x 594 mm)  | 111,8 cm x 15 m (44") | 3" *) |

\*) supplied with each two adapters 3" to 2" core

RGB-ICC profiles are available on [www.tecco-photo.de](http://www.tecco-photo.de)

INKJET PAPER

**Important:** Before using our print media, please verify that it is suitable for use with your printer. We shall not assume liability for non-performance of the print media resulting from changes beyond our control in printing inks or printers. Specifications are subject to change without notice. This product data sheet is intended to be used as a guideline only.

**Storing conditions:** Please keep product in the supplied boxes for best possible protection. Product must be stored in a cool and dry environment, exposure to sun light is to be avoided.