

STEP-BY-STEP INSTRUCTIONS I

INDESIGN: PRINT SETTINGS FOR PANTONE PLUS COLOURS

InDesign print settings for your Epson photo printer

Before you start, ensure you are using the best and most up-to-date version of everything (firmware, printer drivers etc.) and calibrate your printer. Create your file with PANTONE PLUS colours.

Please follow the steps below and select the highlighted print settings for the best possible print results (You can leave all other settings unchanged or select individual ones as required):

Color Settings

- Settings: Custom
- Advanced Mode:
- 1 Working Spaces**
 - RGB: Adobe RGB (1998)
 - CMYK: ISO Coated v2 (ECI)
- Color Management Policies
 - RGB: Off
 - CMYK: Off
- Conversion Options
 - Engine: Adobe (ACE)
 - Intent: Absolute Colorimetric
 - Use Black Point Compensation:

New Color Swatch

- Swatch Name: PANTONE 100 C
- Color Type: **3 Spot**
- Color Mode: RGB
- Red: 241
- Green: 227
- Blue: 101

Print

- Print Preset: [Custom]
- 4 Printer: Your Epson photo printer**
- Color Management
 - Print: Proof (Profile: ISO Coated v2 (ECI))
 - Options
 - 5 Color Handling: Let InDesign Determine Colours**
 - Printer Profile: Printer + Premium Semimatte Photo Paper (260)

Current Settings

- Media Type: Premium Semimatte Photo Paper (260)
- Print Quality Level: LEVEL 5
- Print Quality: SuperPhoto - 2880x1440dpi
- High Speed: Off
- Color: Off
- Color Adjustment: Off (No Color Adjustment)

Properties of your Epson photo printer

- Media Settings
 - 6 Media Type: Premium Semimatte Photo Paper (260)**
 - Color: Color
 - 7 Print Quality: Quality Options**
 - Mode: **8 Off (No Color Adjustment)**
- Paper Settings
 - Source: Roll Paper
 - Size: Pantone
- Ink Levels: GR, LLK, Y, LC, VLM, OR, MK, VM, LK, C, PK

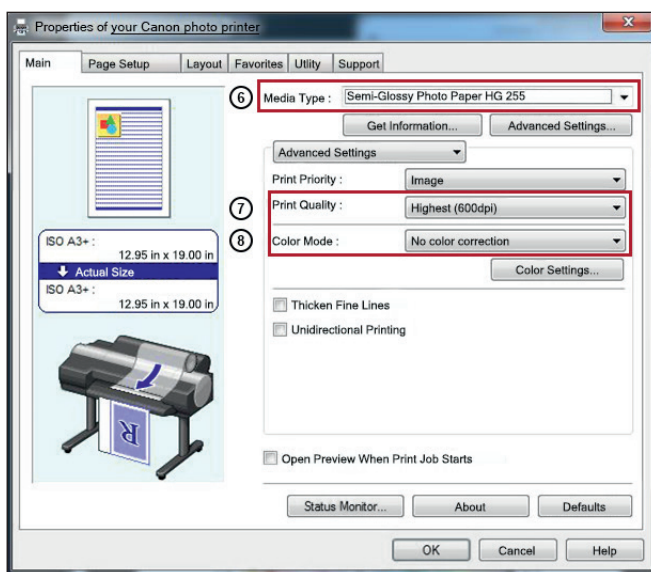
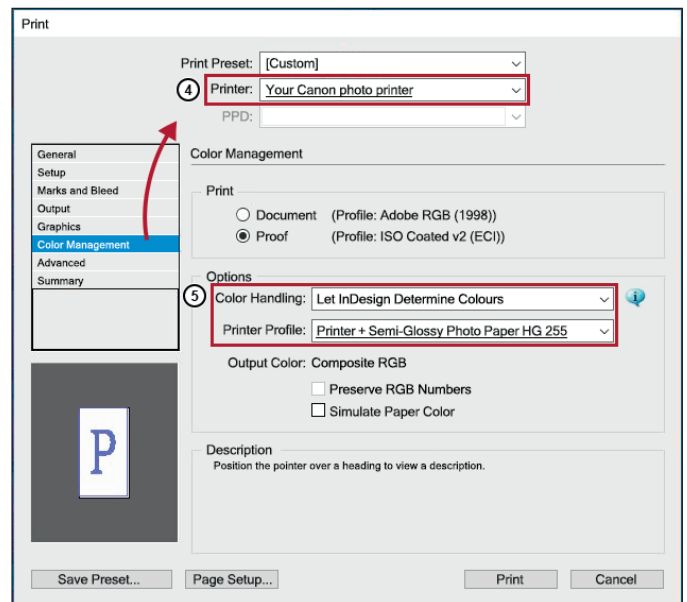
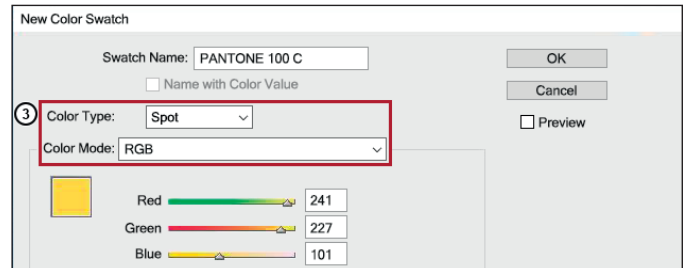
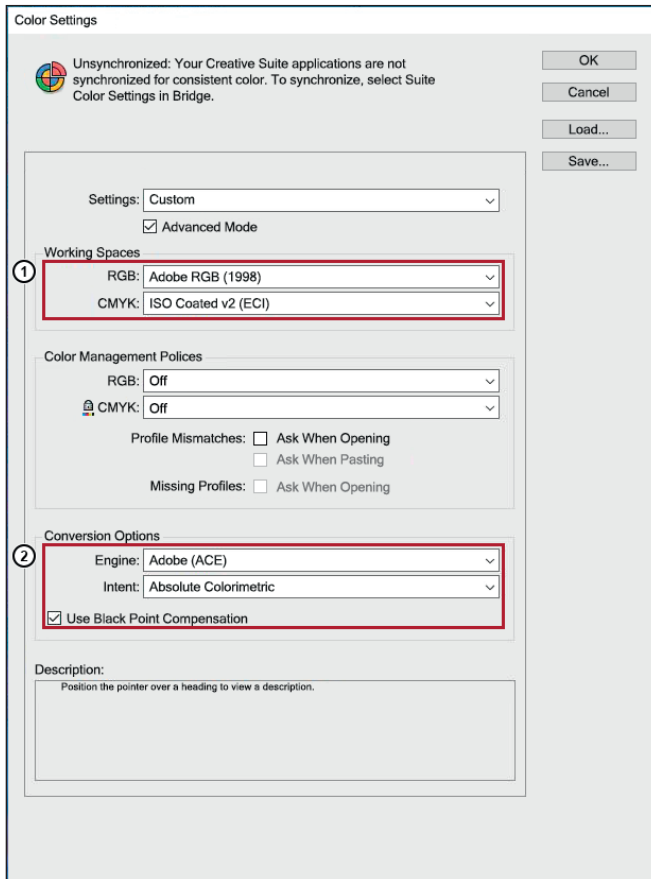
Any questions? If so, please contact your dealer for further information.

STEP-BY-STEP INSTRUCTIONS I

INDESIGN: PRINT SETTINGS FOR PANTONE PLUS COLOURS

InDesign print settings for your Canon photo printer

Before you start, ensure you are using the best and most up-to-date version of everything (firmware, printer drivers etc.) and, if possible, calibrate your printer to PANTONE® VIBRANT by Felix Schoeller. Create your file with PANTONE PLUS colours. Please follow the steps below and select the highlighted print settings for the best possible print results (You can leave all other settings unchanged or select individual ones as required):



Any questions? If so, please contact your dealer for further information.