



Inkjet & Laser Paper

PROOF, PHOTO & PRODUCTION MEDIA

PRICELIST
PREISLISTE

01/2011

The right media for top results



PROOF



PHOTO



PRODUCTION



LASER



POWERED BY



presented by



Paper	Application	Page	Ink compatibility						suitable for		
			Waterbased inks	Full/Eco/Mid-Solvent inks	UV curable and Latex inks	Laser printers	B1 certified	Outdoor-Applications	Proofing	Photo	Production
			1.	2.	3.	1.	2.	3.	1.	2.	3.
EFI PROOF PAPER											
EFI Proof Paper Starterkit	8x4 Blatt A3+										
EFI Proof Paper 9120XF Matt	(120 g/m²)	FSC mixed sources									
EFI Proof Paper 5120 Matt	(120 g/m²)										
EFI Proof Paper 5125 DUO-Matt	(125 g/m²)										
EFI Proof Paper 5165 Matt	(165 g/m²)										
EFI Proof Paper 9155 DUO-Semimatt	(170 g/m²)										
EFI Remoteproof Paper 9180 Semimatt	(180 g/m²)										
EFI Offset Proof Paper 9100 Semimatt	(140 g/m²)										
EFI Offset Proof Paper 9200 Semimatt	(200 g/m²)	FSC mixed sources									
EFI Gravure Proof Paper 4245 Semimatt	(245 g/m²)										
EFI CertProof Paper 6225XF Semimatt	(225 g/m²)	PEFC 100%									
EFI Proof Paper 5200XF Semiglossy	(200 g/m²)	PEFC 100%									
EFI Proof Paper 7250PP Semimatt	(240 g/m²)	PEFC 100%									
EFI Packaging Proof 9300ICS	(300 g/m²)										
EFI FlexoProof Glossy-Film	(130 µ)										
EFI Proof Paper 6260 DUO-Semiglossy	(260 g/m²)	PEFC 100%									
EFI Proof Paper ZP 55 (Newspaper)	(55 g/m²)										
EFI Proof Paper ZP 80 (Premium Newspaper)	(80 g/m²)										
EFI PHOTO PAPER											
EFI Photo Paper 1260 Semimatt	(250 g/m²)										
EFI Photo Premium Paper 4250 High-Gloss	(250 g/m²)										
EFI Photo Classic Baryt 4270 Satin	(270 g/m²)										
EFI Photo FineArt 'Handmade' Water Color Paper	(140 g/m²)										
EFI Photo FineArt Canvas	(520 µ)										
EFI Photo FineArt Cotton Paper	(295 g/m²)										
EFI PRODUCTION PAPER											
EFI Production Paper 1085Economy Matt	(90 g/m²)	FSC mixed sources									
EFI Production Premium Paper 1120 Matt	(120 g/m²)	FSC mixed sources									
EFI Production Textile-Banner 1155 Matt	(155 g/m²)										
EFI Production Premium Paper 1200 Semiglossy	(200 g/m²)	PEFC 100%									
EFI Production Premium Paper 1200XF Semiglossy	(200 g/m²)	PEFC 100%									
EFI Production Premium Paper 2200 Glossy	(200 g/m²)	PEFC 100%									
EFI Production Premium Paper 2200XF Glossy	(200 g/m²)	PEFC 100%									
EFI Production Paper 1090ADH Matt	(190 g/m²)										
EFI Production Paper 1200ADH Semiglossy	(280 g/m²)										
EFI Production Paper 2200ADH Glossy	(280 g/m²)										
EFI Production Paper 1300ADH Vinyl	(300 µ)										
EFI Production Paper 1510 Vinyl Banner	(510 µ)										
EFI Production Paper 1150 Tyvek Banner	(150 g/m²)										
EFI Production Paper 1140 Backlit	(140 µ)										
EFI Production Dot Film XF	(140 µ)										
EFI PRODUCTION ecoS PAPER											
EFI Production ecoS Paper G140 Glossy	(140 g/m²)										
EFI Production ecoS Paper HG225 High-Gloss	(225 g/m²)	PEFC 100%									
EFI Production ecoS Paper SG225 Semiglossy	(225 g/m²)	PEFC 100%									
EFI Production ecoS Paper BB135 Blueback	(135 g/m²)										
EFI Production ecoS Backlit BLG150 Glossy	(150 µ)										
EFI Production ecoS FineArt CV320 Canvas "Emotion"	(320 g/m²)										
EFI LASER PAPER											
EFI Laser Paper Starterkit											
EFI Laser Paper ZP 78 (Newspaper)	(78 g/m²)										
EFI Laser Paper Matt 102M	(102 g/m²)	FSC mixed sources									
EFI Laser Paper Matt 162M	(162 g/m²)	FSC mixed sources									
EFI Laser Proof Paper XF115 Semimatt	(115 g/m²)	FSC mixed sources									
EFI Laser Proof Paper XF130 Semimatt	(130 g/m²)	FSC mixed sources									
EFI Laser Magazine Print Paper 130 Semiglossy	(130 g/m²)	PEFC 100%									
EFI Laser Paper Glossy 162GL	(162 g/m²)										
EFI Laser Paper Glossy 205GL	(205 g/m²)										
EFI Laser Photo Paper 250 SatinRaster	(250 g/m²)	FSC mixed sources									
Best/EFI Classics											
End of life products (subject to prior sale)											
EFI Proof Paper 9150 Semimatt	(150 g/m²)										
Best/EFI Proof Paper 5150 Glossy	(150 g/m²)										
EFI Proof Paper 5180 Heavy-Gloss	(180 g/m²)										
EFI Photo Paper 1250 Semimatt	(250 g/m²)										
Best/EFI Fine Art Paper Gallery Board	(330 g/m²)										
Best/EFI Fine Art Watercolor Paper	(230 g/m²)										
Best/EFI Proof Paper 8180 Semiglossy	(180 g/m²)										
EFI Proof Premium Paper 8260 Semiglossy	(260 g/m²)										
EFI Laser Paper DUO-Semimatt 105SM	(105 g/m²)										
EFI Proof Paper 9190 Matt	(190 g/m²)										
EFI Budget Proof Paper 3170 Semimatt	(165 g/m²)										
EFI Budget Proof Paper 3130 Semimatt	(130 g/m²)										
EFI Production Paper 1160 PET-Film	(160 g/m²)										



The mark of responsible forestry



PROOF



Inkjet & Laser Paper
PROOF, PHOTO & PRODUCTION MEDIA

Water based inks	Full/Eco/Mid-Solvent inks	UV-curable inks	Laser printers	B1 certified	Outdoor-Applications
------------------	---------------------------	-----------------	----------------	--------------	----------------------



Printing media for colour inkjet printers

NEW

part no.

unit

size

core

recommended for

Application and icc-supported profiles with the following product segments:

EFI Contract Proof Paper Starterkit

Content:

each 4 sheets of the following printing media:
 EFI Proof Paper 9120XF Matt (120 g/m²)
 EFI Proof Paper 5120 Matt (120 g/m²)
 EFI Offset Proof Paper 9100 Semimatt (140 g/m²)
 EFI Offset Proof Paper 9200 Semimatt (200 g/m²)
 EFI Gravure Proof Paper 4245 Semimatt (245 g/m²)
 EFI CertProof Paper 6225XF Semimatt (225 g/m²)
 EFI FlexoProof Glossy-Film (130µ)
 EFI Photo Premium 4250 High-Gloss (250 g/m²)

6064000002

Box

DIN A3+

Green	White	Yellow	Blue	Black
-------	-------	--------	------	-------

29,80 €

- PROOFING SOLUTIONS
- PHOTO SOLUTIONS
- PRODUCTION SOLUTIONS

EFI Proof Paper 9120XF Matt

(120 g/m²)



Matt coated, taylor made for contract-proofing applications. For affordable prints with high color fidelity. **This proofing paper contains almost zero optical brighteners.** The special coloring and **the high L-value of 96,5** make this paper especially suitable for the simulation of matt printing media



The mark of responsible forestry

***) All roll units are supplied with each two adapters 3" to 2" core.**

6740210297	200 sheets	DIN A4
6740241340	200 sheets	SUPER A4
6740297420	200 sheets	DIN A3
6740330483	200 sheets	DIN A3+
6740329558	200 sheets	A3++
6740420594	200 sheets	DIN A2
6740594841	200 sheets	DIN A1
6740254041	roll	25,4 cm x 40 m (10")
6740329010	roll	32,9 cm x 10 m (13")
6740360041	roll	36,0 cm x 40 m (14,17")
6740432041	roll	43,2 cm x 40 m (17")
6740508041	roll	50,8 cm x 40 m (20")
6740610041	roll	61,0 cm x 40 m (24")
6740914041	roll	91,4 cm x 40 m (36")
6740107041	roll	106,7 cm x 40 m (42")
6740112041	roll	111,8 cm x 40 m (44")
6740127041	roll	127,0 cm x 40 m (50")
6740135041	roll	135,0 cm x 40 m (53,125")
6740152041	roll	152,0 cm x 40 m (60")
6740162041	roll	162,6 cm x 40 m (64")

Green	White	Yellow	Blue	Black
-------	-------	--------	------	-------

43,50 €

60,40 €

87,00 €

117,80 €

135,20 €

174,00 €

348,00 €

28,60 €

14,20 €

36,90 €

44,30 €

52,10 €

62,60 €

93,70 €

109,40 €

114,60 €

130,20 €

138,40 €

155,80 €

166,20 €

- PROOFING SOLUTIONS
- PHOTO SOLUTIONS
- PRODUCTION SOLUTIONS

6740999999 **Sample**

43,2 cm x 5 m (17")

3"

5,60 €

PROOF



Inkjet & Laser Paper
PROOF, PHOTO & PRODUCTION MEDIA

Water based inks	Full/Eco/Mid-Solvent inks	UV-curable inks	Laser printers	B1 certified	Outdoor-Applications
------------------	---------------------------	-----------------	----------------	--------------	----------------------



Printing media for colour inkjet printers

NEW

part no.

unit

size

core

recommended for

Application and icc-supported profiles with the following product segments:

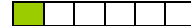
EFI Proof Paper 5120 Matt

(120 g/m²)

Matt coated bright-white paper, especially suitable for affordable proofs and other prints with high color fidelity

***) All roll units are supplied with each two adapters 3" to 2" core.**

6091210297	200 sheets	DIN A4		
6091241340	200 sheets	SUPER A4		
6091297420	200 sheets	DIN A3		
6091330483	200 sheets	DIN A3+		
6091420594	200 sheets	DIN A2		
6091594841	200 sheets	DIN A1		
6091329010	roll	32,9 cm x 10 m (13")	2"	
6091360035	roll	36,0 cm x 35 m (14,17")	2"	
6091432036	roll	43,2 cm x 35 m (17")	3**)	
6091610037	roll	61,0 cm x 35 m (24")	3**)	
6091914037	roll	91,4 cm x 35 m (36")	3**)	
6091107035	roll	106,7 cm x 35 m (42")	2"	
6091112036	roll	111,8 cm x 35 m (44")	3**)	
6091127035	roll	127,0 cm x 35 m (50")	2"	
6091135035	roll	135,0 cm x 35 m (53,125")	3**)	
6091999998	Sample	43,2 cm x 5 m (17")	3**)	



39,40 €
54,50 €
78,80 €
104,30 €
157,60 €
315,20 €
11,00 €
33,60 €
33,80 €
46,70 €
62,40 €
83,40 €
93,90 €
104,30 €
114,80 €

- PROOFING SOLUTIONS
- PHOTO SOLUTIONS
- PRODUCTION SOLUTIONS

EFI Proof Paper 5125 DUO-Matt

(125 g/m²)



Double side matt coated paper, bright-white, especially suitable for affordable proofs and other prints with high color fidelity. Only suitable for single sheet feeding.

6070210297	100 sheets	DIN A4		
6070241340	100 sheets	SUPER A4		
6070297420	100 sheets	DIN A3		
6070330483	100 sheets	DIN A3+		
6070420594	100 sheets	DIN A2		
6070594841	100 sheets	DIN A1		



39,40 €
54,50 €
78,80 €
104,30 €
157,60 €
315,20 €

- PROOFING SOLUTIONS
- PHOTO SOLUTIONS
- PRODUCTION SOLUTIONS

PROOF



Inkjet & Laser Paper
PROOF, PHOTO & PRODUCTION MEDIA

Water based inks
Full/Eco/Mid-Solvent inks
UV-curable inks
Laser printers
B1 certified
Outdoor-Applications



Printing media for colour inkjet printers

NEW

part no.

unit

size

core

recommended for

Application and icc-supported profiles with the following product segments:

EFI Proof Paper 5165 Matt

(165 g/m²)

Heavy matt paper, bright-white, especially suitable for affordable proofs and other prints with high color fidelity.

***) All roll units are supplied with each two adapters 3" to 2" core.**

6092210297	100 sheets	DIN A4		
6092241340	100 sheets	SUPER A4		
6092297420	100 sheets	DIN A3		
6092330483	100 sheets	DIN A3+		
6092420594	100 sheets	DIN A2		
6092594841	100 sheets	DIN A1		
6092329010	roll	32,9 cm x 10 m (13")	2"	
6092360020	roll	36,0 cm x 20 m (14,17")	2"	
6092432021	roll	43,2 cm x 20 m (17")	3**)	
6092610022	roll	61,0 cm x 20 m (24")	3**)	
6092914022	roll	91,4 cm x 20 m (36")	3**)	
6092107020	roll	107,0 cm x 20 m (42")	2"	
6092112022	roll	111,8 cm x 20 m (44")	3**)	
6092127020	roll	127,0 cm x 20 m (50")	2"	
6092135020	roll	135,0 cm x 20 m (53 1/8")	3**)	
6092999997	Sample	43,2 cm x 5 m (17")	3**)	



22,40 €
29,50 €
44,80 €
57,20 €
89,60 €
179,20 €
15,30 €
20,40 €
25,60 €
33,90 €
50,80 €
59,40 €
62,10 €
70,40 €
77,50 €

- PROOFING SOLUTIONS
- PHOTO SOLUTIONS
- PRODUCTION SOLUTIONS

EFI Proof Paper 9155 DUO-Semimatt

(170 g/m²)



Double side coated semimatt paper, extremely short drying time, wipefast, taylor made for the proof segment and for other applications with high color fidelity. Only suitable for single sheet feeding.

***) All roll units are supplied with each two adapters 3" to 2" core.**

6073210297	100 sheets	DIN A4		
6073241340	100 sheets	SUPER A4		
6073297420	100 sheets	DIN A3		
6073330483	100 sheets	DIN A3+		
6073420594	100 sheets	DIN A2		
6073594841	100 sheets	DIN A1		
6073329010	roll	32,9 cm x 10 m (13")	2"	
6073360030	roll	36,0 cm x 30 m (14,17")	2"	
6073432031	roll	43,2 cm x 30 m (17")	3" *)	
6073610031	roll	61,0 cm x 30 m (24")	3**)	
6073914031	roll	91,4 cm x 30 m (36")	3**)	
6073107030	roll	106,7 cm x 30 m (42")	2"	
6073112031	roll	111,8 cm x 30 m (44")	3**)	
6073127030	roll	127,0 cm x 30 m (50")	2"	
6073999998	Sample	43,2 cm x 5 m (17")	3**)	



80,00 €
109,70 €
160,00 €
204,00 €
320,00 €
640,00 €
61,40 €
132,30 €
158,40 €
223,50 €
335,20 €
388,50 €
409,00 €
465,40 €

- PROOFING SOLUTIONS
- PHOTO SOLUTIONS
- PRODUCTION SOLUTIONS

PROOF



Inkjet & Laser Paper
PROOF, PHOTO & PRODUCTION MEDIA

Water based inks	Full/Eco/Mild-Solvent inks	UV-curable inks	Laser printers	B1 certified	Outdoor-Applications
------------------	----------------------------	-----------------	----------------	--------------	----------------------



Printing media for colour inkjet printers

NEW

part no.

unit

size

core

recommended for

Application and icc-supported profiles with the following product segments:

EFI Remoteproof Paper 9180 Semimatt

(180 g/m²)



The EFI Remoteproof Paper 9180 semimatt for use with both pigmented and dye-based ink, was specially developed for the offset proofing market. It is an ideal product for all applications with color accurate demand. The very low content of optical brighteners eliminates an important source of metamerism effects. Due to its neutral paper shade (LAB-Value: 95.59; 0.6; -2.3) this paper is highly recommended to simulate all common reference papers of the offset printing industry. In most cases the simulation of the paper white becomes redundant due to the adjusted coloration of the paper. The extraordinary consistency and stability of the 9180 matches all critical specifications for remoteproof applications. This media is compatible for proof creation according to ISO 12647-7.

(By using the K3 inks, the gamut of the ISO coated V2 cannot be covered in the magenta-red-area. For this purpose we suggest the the FograCert EFI Offset Proof Paper 9100/9200 Semimatt or grades EFI 4245 Semimatt/EFI 6225XF Semimatt. Please note: The paper types ISO web-coated (PT3) and ISO uncoated (PT4) can be covered in combination with the K3 inks.)

***) All roll units are supplied with each two adapters 3" to 2" core.**

*****) Suitable e. g. for HP DesignJet 70 and 90 Series**

6097210297	100 sheets	DIN A4		63,60 €
6097241340	100 sheets	SUPER A4		87,20 €
6097297420	100 sheets	DIN A3		127,20 €
6097330483	100 sheets	DIN A3+		163,00 €
6097329558	100 sheets	A3++		190,20 €
6097420594	100 sheets	DIN A2		254,40 €
6097594841	100 sheets	DIN A1		508,80 €
6097254030	roll	25,4 cm x 30 m (10")	2"	75,40 €
6097329010	roll	32,9 cm x 10 m (13")	2"	40,90 €
6097329030	roll	32,9 cm x 30 m (13")	2"	97,30 €
6097360030	roll	36,0 cm x 30 m (14,17")	2"	106,60 €
6097432031	roll	43,2 cm x 30 m (17")	3" *)	128,20 €
6097457025	roll	45,7 cm x 25 m (18")	2" ***)	113,70 €
6097508030	roll	50,8 cm x 30 m (20")	2"	150,70 €
6097610031	roll	61,0 cm x 30 m (24")	3" *)	180,40 €
6097914031	roll	91,4 cm x 30 m (36")	3" *)	269,60 €
6097107031	roll	106,7 cm x 30 m (42")	3" *)	314,70 €
6097112031	roll	111,8 cm x 30 m (44")	3" *)	330,10 €
6097127030	roll	127,0 cm x 30 m (50")	2"	374,20 €
6097135030	roll	135,0 cm x 30 m (53,125")	3" *)	404,90 €
6097137030	roll	137,0 cm x 30 m (54")	2"	404,90 €
6097152030	roll	152,0 cm x 30 m (60")	2"	449,00 €
6097162031	roll	162,6 cm x 30 m (64")	3" *)	479,50 €
6097182030	roll	182,8 cm x 30 m (72")	2"	539,20 €
6097999998	5 sheets	DIN A3+		10,30 €
6097999997	Sample	43,2 cm x 5 m (17")	3**)	19,50 €



- PROOFING SOLUTIONS
- PHOTO SOLUTIONS
- PRODUCTION SOLUTIONS

PROOF



Inkjet & Laser Paper
PROOF, PHOTO & PRODUCTION MEDIA

Water based inks	Full/Eco/Mild-Solvent inks	UV-curable inks	Laser printers	B1 certified	Outdoor-Applications
------------------	----------------------------	-----------------	----------------	--------------	----------------------



Printing media for colour inkjet printers

NEW

part no.

unit

size

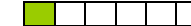
core

recommended for

Application and icc-supported profiles with the following product segments:

EFI Offset Proof Paper 9100 Semimatt

(140 g/m²)



The EFI Offset Proof Paper 9100 Semimatt is a taylormade offset proofing media for use with both pigmented and dye-based ink. The very wide color gamut and the consistent quality covers the paper type classes PT1, PT2 and PT3. The 9100 offers the look and feel of an actual offset press stock. The very low content of optical brighteners guarantees a high color stability - metamerism effects are minimised. This media is Fogra substratecertified and thus very compatible for proof creation according to the ISO 12647-7 norm.

***) All roll units are supplied with each two adapters 3" to 2" core.**

****) Suitable e. g. for HP 120/130 series**

*****) Suitable e. g. for HP DesignJet 70 and 90 Series**

6732210297	100 sheets	DIN A4	
6732241340	100 sheets	SUPER A4	
6732297420	100 sheets	DIN A3	
6732330483	100 sheets	DIN A3+	
6732329558	100 sheets	A3++	
6732420594	100 sheets	DIN A2	
6732594841	100 sheets	DIN A1	
6732254031	roll	25,4 cm x 30 m (10")	3" *)
6732329010	roll	32,9 cm x 10 m (13")	2"
6732329031	roll	32,9 cm x 30 m (13")	3" *)
6732360031	roll	36,0 cm x 30 m (14,17")	3" *)
6732432031	roll	43,2 cm x 30 m (17")	3" *)
6732457025	roll	45,7 cm x 25 m (18")	2" ***)
6732508031	roll	50,8 cm x 30 m (20")	3" *)
6732610025	roll	61,0 cm x 25 m (24")	2" **)
6732610031	roll	61,0 cm x 30 m (24")	3" *)
6732914031	roll	91,4 cm x 30 m (36")	3" *)
6732107031	roll	106,7 cm x 30 m (42")	3" *)
6732112031	roll	111,8 cm x 30 m (44")	3" *)
6732127031	roll	127,0 cm x 30 m (50")	3" *)
6732135031	roll	135,0 cm x 30 m (53,125")	3" *)
6732137031	roll	137,0 cm x 30 m (54")	3" *)
6732152031	roll	152,4 cm x 30 m (60")	3" *)
6732162031	roll	162,6 cm x 30 m (64")	3"
6732999998	5 sheets	DIN A3+	
6732999999	Sample	43,2 cm x 5 m (17")	3" *)

53,20 €
70,00 €
106,40 €
136,00 €
157,10 €
212,80 €
425,60 €
58,60 €
38,90 €
76,00 €
83,10 €
99,70 €
87,90 €
117,20 €
117,30 €
140,80 €
210,90 €
246,20 €
257,90 €
293,00 €
311,40 €
316,10 €
351,50 €
375,10 €
6,90 €
16,70 €

- PROOFING SOLUTIONS
- PHOTO SOLUTIONS
- PRODUCTION SOLUTIONS

PROOF



Inkjet & Laser Paper
PROOF, PHOTO & PRODUCTION MEDIA

Water based inks	Full/Eco/Mild-Solvent inks	UV-curable inks	Laser printers	B1 certified	Outdoor-Applications
------------------	----------------------------	-----------------	----------------	--------------	----------------------



Printing media for colour inkjet printers

NEW

part no.

unit

size

core

recommended for

Application and icc-supported profiles with the following product segments:

EFI Offset Proof Paper 9200 Semimatt

(200 g/m²)



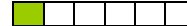
The EFI Offset Proof Paper 9200 Semimatt media features a white point and gamut capacity that meets the requirements of high-end offset proofing. The appearance (haptic) resembles typical offset production paper. A very low content of optical brighteners guarantees a high color stability - metamerism effects are minimised. Due to its neutral paper white (LAB-Value: 96.7, 0.7, -1.2) the 9200 is highly recommended to simulate all common reference papers of the offset printing industry. In most cases the simulation of the paper white becomes redundant. The EFI Offset Proof Paper 9200 is delivered with an EFI backside printing and is compatible for proof creation according to ISO 12647-7.

***) All roll units are supplied with each two adapters 3" to 2" core.**

****) Suitable e. g. for HP 120/130 series**

*****) Suitable e. g. for HP DesignJet 70 and 90 Series**

6731210297	100 sheets	DIN A4		
6731241340	100 sheets	SUPER A4		
6731297420	100 sheets	DIN A3		
6731330483	100 sheets	DIN A3+		
6731329558	100 sheets	A3++		
6731420594	100 sheets	DIN A2		
6731594841	100 sheets	DIN A1		
6731254031	roll	25,4 cm x 30 m (10")	3" *)	
6731329010	roll	32,9 cm x 10 m (13")	2"	
6731329031	roll	32,9 cm x 30 m (13")	3" *)	
6731360031	roll	36,0 cm x 30 m (14,17")	3" *)	
6731432031	roll	43,2 cm x 30 m (17")	3" *)	
6731457025	roll	45,7 cm x 25 m (18")	2" ***)	
6731508031	roll	50,8 cm x 30 m (20")	3" *)	
6731610025	roll	61,0 cm x 25 m (24")	2" **)	
6731610031	roll	61,0 cm x 30 m (24")	3" *)	
6731914031	roll	91,4 cm x 30 m (36")	3" *)	
6731107031	roll	106,7 cm x 30 m (42")	3" *)	
6731112031	roll	111,8 cm x 30 m (44")	3" *)	
6731127031	roll	127,0 cm x 30 m (50")	3" *)	
6731135031	roll	135,0 cm x 30 m (53,125")	3" *)	
6731137031	roll	137,0 cm x 30 m (54")	3" *)	
6731152031	roll	152,4 cm x 30 m (60")	3" *)	
6731162031	roll	162,6 cm x 30 m (64")	3" *)	
6731999998	5 sheets	DIN A3+		
6731999999	Sample	43,2 cm x 5 m (17")	3" *)	



55,70 €
73,10 €
111,40 €
142,20 €
163,80 €
222,80 €
445,60 €
61,80 €
40,60 €
80,00 €
87,60 €
105,00 €
92,60 €
123,50 €
123,60 €
148,30 €
222,20 €
259,30 €
271,70 €
308,60 €
328,00 €
333,40 €
370,30 €
395,60 €
7,20 €
17,70 €

- PROOFING SOLUTIONS
- PHOTO SOLUTIONS
- PRODUCTION SOLUTIONS

PROOF



Inkjet & Laser Paper
PROOF, PHOTO & PRODUCTION MEDIA

Water based inks	Full/Eco/Mid-Solvent inks	UV-curable inks	Laser printers	B1 certified	Outdoor-Applications
------------------	---------------------------	-----------------	----------------	--------------	----------------------



Printing media for colour inkjet printers

NEW

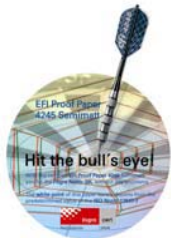
part no. unit size core

recommended for

Application and icc-supported profiles with the following product segments:

EFI Gravure Proof Paper 4245 Semimatt

(245 g/m²)



The FograCert EFI Gravure Proof Paper 4245 Semimatt is designed for use with the latest ink generation of the leading printer manufacturers (K3, Lucia, Vivid, Vivera, etc.). It meets the industry's most stringent quality and consistency requirements. A very low content of optical brighteners guarantees a high color stability - metamerism effects are minimised. The microporous, PE coated media hits the Fogra Norm 39L without any problems. The white point of the 4245 barely departs from the predetermined value defined by ISO 12647-7. In most cases the simulation of the paper white becomes redundant. The 4245 provides users with simplified installation, improved productivity, increased profitability and ease of use - all with the consistency and reliability sealed by CRACoL/SWOP (granted for #3) and FOGRA Cert for proofing substrate (ISO 12647-7). The #1 bestseller out of the EFI Paper range is supplied with the EFI-FOGRA print on the backside. Naturally this media is compatible for proof creation according to ISO 12647-7.

*) All roll units are supplied with each two adapters 3" to 2" core.

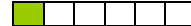
**) Suitable e. g. for HP 120/130 series

***) Suitable e. g. for HP DesignJet 70 and 90 Series

NEW

6098100150	100 sheets	0x15 (10,2 x 15,2 cm)	
6098210297	100 sheets	DIN A4	
6098241340	100 sheets	SUPER A4	
6098297420	100 sheets	DIN A3	
6098330483	100 sheets	DIN A3+	
6098329558	100 sheets	A3++	
6098420594	100 sheets	DIN A2	
6098594841	100 sheets	DIN A1	
6098254031	roll	25,4 cm x 30 m (10")	3" *)
6098305031	roll	30,5 cm x 30 m (12")	3" *)
6098329010	roll	32,9 cm x 10 m (13")	2"
6098329031	roll	32,9 cm x 30 m (13")	3" *)
6098360031	roll	36,0 cm x 30 m (14,17")	3" *)
6098432031	roll	43,2 cm x 30 m (17")	3" *)
6098432041	roll	43,2 cm x 40 m (17")	3" *)
6098457025	roll	45,7 cm x 25 m (18")	2" ***)
6098508031	roll	50,8 cm x 30 m (20")	3" *)
6098610025	roll	61,0 cm x 25 m (24")	2" **)
6098610031	roll	61,0 cm x 30 m (24")	3" *)
6098610041	roll	61,0 cm x 40 m (24")	3" *)
6098914031	roll	91,4 cm x 30 m (36")	3" *)
6098107031	roll	106,7 cm x 30 m (42")	3" *)
6098112031	roll	111,8 cm x 30 m (44")	3" *)
6098127031	roll	127,0 cm x 30 m (50")	3" *)
6098135031	roll	135,0 cm x 30 m (53,125")	3" *)
6098137031	roll	137,0 cm x 30 m (54")	3" *)
6098152031	roll	152,4 cm x 30 m (60")	3" *)

6098999998	5 sheets	DIN A3+	
6098999996	Sample	43,2 cm x 5 m (17")	3" *)



13,90 €
54,80 €
71,90 €
109,60 €
139,80 €
161,50 €
219,20 €
438,40 €
70,80 €
78,90 €
40,00 €
78,90 €
85,80 €
103,10 €
137,40 €
90,90 €
121,20 €
121,20 €
145,50 €
194,00 €
217,90 €
254,40 €
266,50 €
302,70 €
321,80 €
326,60 €
363,30 €

- PROOFING SOLUTIONS
- PHOTO SOLUTIONS
- PRODUCTION SOLUTIONS

PROOF



Inkjet & Laser Paper
PROOF, PHOTO & PRODUCTION MEDIA

Water based inks	Full/Eco/Mild-Solvent inks	UV-curable inks	Laser printers	B1 certified	Outdoor-Applications
------------------	----------------------------	-----------------	----------------	--------------	----------------------



Printing media for colour inkjet printers

NEW

part no.

unit

size

core

recommended for

Application and icc-supported profiles with the following product segments:

EFI CertProof Paper 6225XF Semimatt

(225 g/qm)



The EFI CertProof Paper 6225XF Semimatt is a universal purpose PE-coated, microporous paper designed for offset and gravure proofing. It shows outstanding results with the latest ink generation of the leading printer manufacturers (K3, Lucia, Vivid, Vivera, etc.). With its very wide color gamut the media is capable of Spot-Color Proofing and meets the industry's most stringent quality and consistency requirements. The huge gamut covers paper type classes PT1, PT2 and PT3, furthermore this grade is FOGRA/ISO 12647-7 and SWOP/GRACoL #1 certified. The EFI CertProof Paper 6225XF has almost no optical brighteners which minimises metamerism and reduces measurement errors in the profiling process. It is supplied with the EFI-FOGRA-PEFC print on the backside. Naturally this media is compatible for proof creation according to ISO 12647-7.

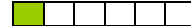
*) All roll units are supplied with each two adapters 3" to 2" core.

**) Suitable e. g. for HP 120/130 series

***) Suitable e. g. for HP DesignJet 70 and 90 Series

6738210297	100 sheets	DIN A4	
6738241340	100 sheets	SUPER A4	
6738297420	100 sheets	DIN A3	
6738330483	100 sheets	DIN A3+	
6738329558	100 sheets	A3++	
6738420594	100 sheets	DIN A2	
6738594841	100 sheets	DIN A1	
6738254031	roll	25,4 cm x 30 m (10")	3" *)
6738329010	roll	32,9 cm x 10 m (13")	2"
6738329031	roll	32,9 cm x 30 m (13")	3" *)
6738360031	roll	36,0 cm x 30 m (14,17")	3" *)
6738432031	roll	43,2 cm x 30 m (17")	3" *)
6738432041	roll	43,2 cm x 40 m (17")	3" *)
6738457025	roll	45,7 cm x 25 m (18")	2" ***)
6738508031	roll	50,8 cm x 30 m (20")	3" *)
6738610025	roll	61,0 cm x 25 m (24")	2" **)
6738610031	roll	61,0 cm x 30 m (24")	3" *)
6738610041	roll	61,0 cm x 40 m (24")	3" *)
6738914031	roll	91,4 cm x 30 m (36")	3" *)
6738107031	roll	106,7 cm x 30 m (42")	3" *)
6738112031	roll	111,8 cm x 30 m (44")	3" *)
6738127031	roll	127,0 cm x 30 m (50")	3" *)
6738135031	roll	135,0 cm x 30 m (53,125")	3" *)
6738137031	roll	137,0 cm x 30 m (54")	3" *)
6738152031	roll	152,4 cm x 30 m (60")	3" *)

6738999998	5 sheets	DIN A3+	
6738999999	Sample	43,2 cm x 5 m (17")	3" *)



48,60 €
70,30 €
97,20 €
124,20 €
143,00 €
194,40 €
388,80 €
62,10 €
34,90 €
69,90 €
76,40 €
91,80 €
122,40 €
80,90 €
107,90 €
108,00 €
129,50 €
172,60 €
194,00 €
226,50 €
237,30 €
269,50 €
290,70 €
290,70 €
322,60 €

- PROOFING SOLUTIONS
- PHOTO SOLUTIONS
- PRODUCTION SOLUTIONS

PROOF



Inkjet & Laser Paper
PROOF, PHOTO & PRODUCTION MEDIA

Water based inks	Full/Eco/Mild-Solvent inks	UV-curable inks	Laser printers	B1 certified	Outdoor-Applications
------------------	----------------------------	-----------------	----------------	--------------	----------------------



Printing media for colour inkjet printers

NEW

part no.

unit

size

core

recommended for

Application and icc-supported profiles with the following product segments:

EFI Proof Paper 5200XF Semiglossy

(200 g/m²)



The EFI Proof Paper 5200XF Semiglossy is a universal purpose coated, microporous paper designed for offset and gravure proofing. **This paper does not contain optical brighteners** and has got the FOGRA substrate cert. as per ISO 12647-7. EFI Proof Paper 5200XF is supplied with the EFI-FOGRA-PEFC print on the backside and is very suitable for contract proofs as per ISO 12647-7 as well as FOGRA Proofcert.

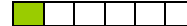


PEFCTM
PEFC/04-31-1091

***) All roll units are supplied with each two adapters 3" to 2" core.**

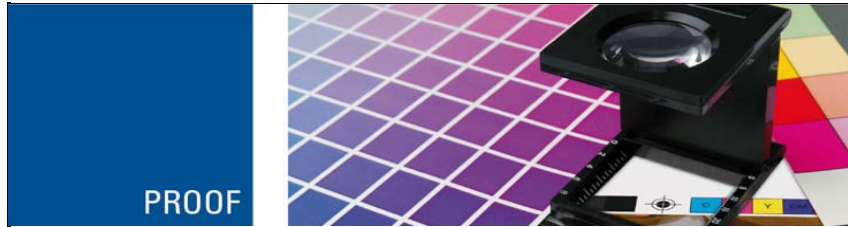
6730210297	100 sheets	DIN A4	
6730241340	100 sheets	SUPER A4	
6730297420	100 sheets	DIN A3	
6730330483	100 sheets	DIN A3+	
6730420594	100 sheets	DIN A2	
6730329036	roll	32,9 cm x 35 m (13")	3" *)
6730432036	roll	43,2 cm x 35 m (17")	3" *)
6730432051	roll	43,2 cm x 50 m (17")	3" *)
6730610036	roll	61,0 cm x 35 m (24")	3" *)
6730610051	roll	61,0 cm x 50 m (24")	3" *)
6730914036	roll	91,4 cm x 35 m (36")	3" *)
6730107036	roll	106,7 cm x 35 m (42")	3" *)
6730111036	roll	111,8 cm x 35 m (44")	3" *)
6730127036	roll	127,0 cm x 35 m (50")	3" *)
6730137036	roll	137,2 cm x 35 m (54")	3" *)
6730152036	roll	152,4 cm x 35 m (60")	3" *)

6730999998	5 sheets	DIN A3+	
6730999999	Sample	43,2 cm x 5 m (17")	3" *)



40,90 €
53,70 €
81,80 €
104,40 €
163,60 €
68,50 €
90,00 €
128,50 €
127,00 €
181,40 €
190,30 €
222,20 €
232,80 €
264,50 €
285,70 €
317,40 €

- PROOFING SOLUTIONS
- PHOTO SOLUTIONS



Inkjet & Laser Paper

PROOF, PHOTO & PRODUCTION MEDIA

- Water based inks
- Full/Eco/Mild-Solvent inks
- UV-curable inks
- Laser printers
- B1 certified
- Outdoor-Applications



Printing media for colour inkjet printers	NEW	part no.	unit	size	core	recommended for	Application and icc-supported profiles with the following product segments:
--	------------	-----------------	-------------	-------------	-------------	------------------------	--

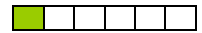
EFI Proof Paper 7250PP Semimatt (240 g/qm)



The EFI Proof Paper 7250PP Semimatt is a universal purpose PE-coated, microporous contract-proofing paper. Due to its LAB-value of 93,8/0,4/2,2 it is very suitable for packaging proofing and publishing proofing applications.

***) All roll units are supplied with each two adapters 3" to 2" core.**


6745330483	100 sheets	DIN A3+	
6745432031	roll	43,2 cm x 30 m (17")	3" *)
6745610031	roll	61,0 cm x 30 m (24")	3" *)
6745914031	roll	91,4 cm x 30 m (36")	3" *)
6745107031	roll	106,7 cm x 30 m (42")	3" *)
6745111031	roll	111,8 cm x 30 m (44")	3" *)



153,50 €
113,40 €
160,10 €
239,90 €
280,10 €
293,50 €

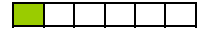
- PROOFING SOLUTIONS
- PHOTO SOLUTIONS
- PRODUCTION SOLUTIONS

EFI Packaging Proof 9300ICS (300 g/m²)



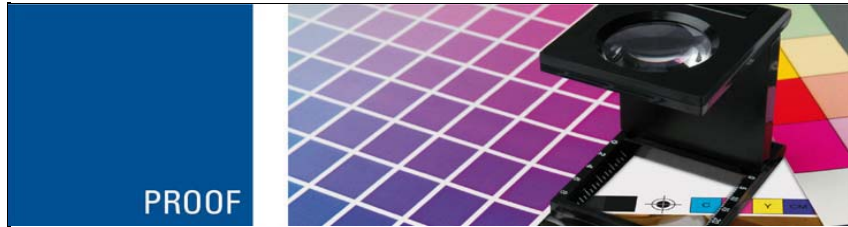
Proof cardboard with semi matt surface **for packaging proof** and other applications, greyish back **similar as packaging cardboard, with huge color gamut.**

6741210297	10 sheets	DIN A4	
6741297420	10 sheets	DIN A3	
6741420594	10 sheets	DIN A2	
6741540780	10 sheets	54,0 cm x 78,0 cm	
6741780108	10 sheets	78,0 cm x 108,0 cm	



22,90 €
45,80 €
91,60 €
137,30 €
274,50 €

- PROOFING SOLUTIONS
- PHOTO SOLUTIONS
- PRODUCTION SOLUTIONS



Inkjet & Laser Paper

PROOF, PHOTO & PRODUCTION MEDIA

- Water based inks
- Full/Eco/Mid-Solvent inks
- UV-curable inks
- Laser printers
- B1 certified
- Outdoor-Applications



Printing media for colour inkjet printers

NEW

part no. unit size core

recommended for

Application and icc-supported profiles with the following product segments:

EFI FlexoProof Glossy-Film

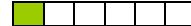
(130 µ)



The EFI Flexo Proof Glossy Film features a very high ink capacity and an extremely huge color gamut. Due to that the white film meets all requirements of high-end spot-color-proofing in the commercial packaging- and flexoprinting industry. The EFI Flexo Proof Glossy Film is designed for use with the latest ink generation of the leading printer manufacturers (K3, Lucia, Vivid, Vivera, etc.). The substrate covers the ISOcoated V2 color gamut easily. This media is Fogra substratecertified and thus very compatible for proof creation according to ISO 12647-7

***) All roll units are supplied with each two adapters 3" to 2" core.**

6737210297	100 sheets	DIN A4	
6737297420	100 sheets	DIN A3	
6737330483	100 sheets	DIN A3+	
6737420594	100 sheets	DIN A2	
6737432031	roll	43,2 cm x 30 m (17")	3" *)
6737610031	roll	61,0 cm x 30 m (24")	3" *)
6737914031	roll	91,4 cm x 30 m (36")	3" *)
6737106031	roll	106,7 cm x 30 m (42")	3" *)
6737111031	roll	111,8 cm x 30 m (44")	3" *)
6737999999	Sample	43,2 cm x 3 m (17")	2"



129,10 €
258,20 €
395,70 €
516,40 €
232,50 €
327,90 €
491,90 €
574,30 €
601,60 €

- PROOFING SOLUTIONS
- PHOTO SOLUTIONS
- PRODUCTION SOLUTIONS

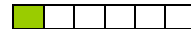
EFI Proof Paper 6260 DUO-Semiglossy

(260 g/m²)



The EFI Proof Paper 6260 DUO-Semiglossy is a universal PE- and Microporous coated proof paper, designed for offset and gravure proofing. This 260 g/m² DUO-Proofing media is **double-side coated**, thus **suitable for duplex applications**.

6743210297	100 sheets	DIN A4
6743297420	100 sheets	DIN A3
6743330483	100 sheets	DIN A3+
6743420594	100 sheets	DIN A2



129,00 €
258,00 €
339,00 €
516,00 €

- PROOFING SOLUTIONS
- PHOTO SOLUTIONS
- PRODUCTION SOLUTIONS

PROOF



Inkjet & Laser Paper
PROOF, PHOTO & PRODUCTION MEDIA

Water based inks	Full/Eco/Mild-Solvent inks	UV-curable inks	Laser printers	B1 certified	Outdoor-Applications
------------------	----------------------------	-----------------	----------------	--------------	----------------------



Printing media for colour inkjet printers

NEW

part no.

unit

size

core

recommended for

Application and icc-supported profiles with the following product segments:

EFI Proof Paper ZP 55 (Newspaper)

(55 g/m²)

Proof Paper similar to standard newspaper. Special surface treatment. Best results with 4-color printing.

6069210297	200 sheets	DIN A4	
6069241340	200 sheets	SUPER A4	
6069297420	200 sheets	DIN A3	
6069305457	200 sheets	A3 ÜF	
6069320450	200 sheets	SRA 3	
6069328453	200 sheets	SUPER A3	
6069330483	200 sheets	DIN A3+	
6069420594	200 sheets	DIN A2	
6069594841	200 sheets	DIN A1	
6069329010	roll	32,9 cm x 10 m (13")	2"
6069420020	roll	42,0 cm x 20 m (16,5")	1"
6069432051	roll	43,2 cm x 50 m (17")	3" *
6069610050	roll	61,0 cm x 50 m (24")	2"
6069610051	roll	61,0 cm x 50 m (24")	3" *
6069914050	roll	91,4 cm x 50 m (36")	2"
6069914051	roll	91,4 cm x 50 m (36")	3" *
6069107050	roll	106,7 cm x 50 m (42")	2"
6069107051	roll	106,7 cm x 50 m (42")	3" *
6069111050	roll	111,8 cm x 50 m (44")	2"
6069111051	roll	111,8 cm x 50 m (44")	3" *
6069127050	roll	127,0 cm x 50 m (50")	2"



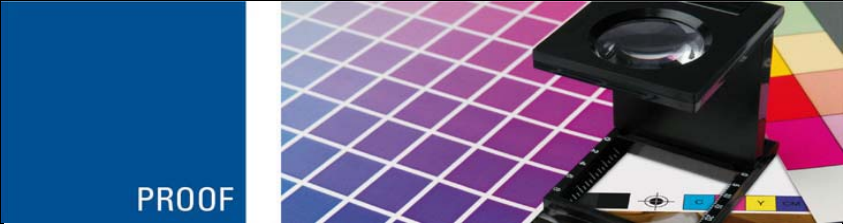


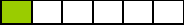
31,00 €
36,20 €
62,00 €
71,30 €
73,60 €
75,90 €
67,70 €
124,00 €
248,00 €
20,40 €
36,20 €
30,80 €
41,40 €
41,40 €
51,90 €
51,90 €
61,40 €
61,40 €
64,50 €
64,50 €
73,70 €

- PROOFING SOLUTIONS
- PHOTO SOLUTIONS
- PRODUCTION SOLUTIONS

*) All roll units are supplied with each two adapters 3" to 2" core.

6069999998	Sample	43,2 cm x 5 m (17")	3" *
6069999999	Sample	61,0 cm x 5 m (24")	2"

5,00 €
5,30 €

	 Inkjet & Laser Paper PROOF, PHOTO & PRODUCTION MEDIA					Water based inks	Full/Eco/Mild-Solvent inks	UV-curable inks	Laser printers	B1 certified	Outdoor-Applications	POWERED BY 
	Printing media for colour inkjet printers	NEW	part no.	unit	size	core						Application and icc-supported profiles with the following product segments:
EFI Proof Paper ZP 80 (Premium Newspaper) (80 g/m ²) Similar to the classical newspaper with a special surface treatment. It is very easy to simulate newspaper with no cockling effect at all. Both the haptic and the optical view give the impression of a real newspaper. *) All roll units are supplied with each two adapters 3" to 2" core.	6729330483	100 Blatt	DIN A3+			52,50 €						
	6729432051	Rolle	43,2 cm x 50 m	(17")	3" *)	50,80 €						
	6729610051	Rolle	61,0 cm x 50 m	(24")	3" *)	71,70 €						
	6729914051	Rolle	91,4 cm x 50 m	(36")	3" *)	107,40 €						
	6729107051	Rolle	106,7 cm x 50 m	(42")	3" *)	125,40 €						
	6729111051	Rolle	111,8 cm x 50 m	(44")	3" *)	131,40 €						
	6729999999	Sample	43,2 cm x 5 m	(17")	3" *)	8,90 €						
The ideal Glossy-Contract-Proof Paper: EFI Photo Premium Paper 4250 High-Gloss (250 g/m ²), please see EFI Photo Papers												

Further EFI printing media for Proof applications can be found in the following product segments:

- PHOTO SOLUTIONS
- PRODUCTION SOLUTIONS

PHOTO



Inkjet & Laser Paper
PROOF, PHOTO & PRODUCTION MEDIA

Water based inks	Full/Eco/Mild-Solvent inks	UV-curable inks	Laser printers	B1 certified	Outdoor-Applications
------------------	----------------------------	-----------------	----------------	--------------	----------------------



Printing media for colour inkjet printers

NEW

part no.

unit

size

core

recommended for

Application and icc-supported profiles with the following product segments:

EFI Photo Paper 1260 Semimatt

(250 g/m²)



Universal heavy weight semimatt photopaper, PE microporous coating, especially suitable for professional photo prints and contract proofing applications. This paper is almost without opt. brighteners and very suitable for offset proofing applications. **EFI 1260 is FOGRA Cert. ISO 12647-7 (semi matte) and delivered with an EFI-Fogra backside printing.**

The FOGRA certified EFI Photo 1260 Semimatt supports and underlines the flexibility of using EFI XF software for different applications.

***) All roll units are supplied with each two adapters 3" to 2" core.**

NEW

6733210297	100 sheets	DIN A4		
6733241340	100 sheets	SUPER A4		
6733297420	100 sheets	DIN A3		
673330483	100 sheets	DIN A3+		
6733420594	100 sheets	DIN A2		
6733594841	100 sheets	DIN A1		
6733254026	roll	25,4 cm x 25 m (10")	3" *	
6733329010	roll	32,9 cm x 10 m (13")	2"	
6733329026	roll	32,9 cm x 25 m (13")	3" *	
6733360026	roll	36,0 cm x 25 m (14,17")	3" *	
6733432026	roll	43,2 cm x 25 m (17")	3" *	
6733508026	roll	50,8 cm x 25 m (20")	3" *	
6733610026	roll	61,0 cm x 25 m (24")	3" *	
6733914026	roll	91,4 cm x 25 m (36")	3" *	
6733107026	roll	106,7 cm x 25 m (42")	3" *	
6733112026	roll	111,8 cm x 25 m (44")	3" *	
6733127026	roll	127,0 cm x 25 m (50")	2"	
6733152025	roll	152,4 cm x 25 m (60")	3" *	



63,40 €
83,30 €
126,80 €
172,20 €
253,60 €
507,20 €
58,70 €
47,20 €
76,00 €
83,10 €
99,70 €
117,20 €
140,80 €
210,90 €
246,20 €
257,90 €
293,00 €
351,50 €

- PROOFING SOLUTIONS
- PHOTO SOLUTIONS
- PRODUCTION SOLUTIONS

6733999998	Sample	43,2 cm x 5 m (17")	3" *	
------------	--------	---------------------	------	--

20,00 €

PHOTO



Inkjet & Laser Paper
PROOF, PHOTO & PRODUCTION MEDIA

Water based inks	Full/Eco/Mild-Solvent inks	UV-curable inks	Laser printers	B1 certified	Outdoor-Applications
------------------	----------------------------	-----------------	----------------	--------------	----------------------



Printing media for colour inkjet printers

NEW

part no.

unit

size

core

recommended for

Application and icc-supported profiles with the following product segments:

EFI Photo Premium Paper 4250 High-Gloss

(250 g/m²)



Universal high-gloss photopaper, PE microporous coating, especially suitable for professional photo prints and other applications. **This paper is also very suitable for offset and flexo proofing applications and FOGRA cert. (ISO 12647-7, glossy). The EFI Photo premium Paper 4250 is delivered with an EFI-Fogra backside printing.** The FOGRA certified EFI Photo Premium Paper 4250 High-Gloss supports and underlines the flexibility of using EFI XF software for different applications.

***) All roll units are supplied with each two adapters 3" to 2" core.**

6310210297	50 sheets	DIN A4		
6310241340	50 sheets	SUPER A4		
6310297420	50 sheets	DIN A3		
6310330483	50 sheets	DIN A3+		
6310420594	50 sheets	DIN A2		
6310594841	50 sheets	DIN A1		
6310254026	roll	25,4 cm x 25 m (10")	3" *	
6310329010	roll	32,9 cm x 10 m (13")	2"	
6310432026	roll	43,2 cm x 25 m (17")	3" *	
6310508026	roll	50,8 cm x 25 m (20")	3" *	
6310610026	roll	61,0 cm x 25 m (24")	3" *	
6310914026	roll	91,4 cm x 25 m (36")	3" *	
6310107026	roll	106,7 cm x 25 m (42")	3" *	
6310112026	roll	111,8 cm x 25 m (44")	3" *	
6310127026	roll	127,0 cm x 25 m (50")	3" *	
6310999998	Sample	43,2 cm x 5 m (17")	3" *	



30,30 €
39,70 €
60,60 €
77,20 €
121,20 €
242,40 €
58,60 €
36,80 €
99,70 €
117,20 €
140,70 €
210,80 €
246,00 €
257,80 €
292,90 €
20,00 €

- PROOFING SOLUTIONS
- PHOTO SOLUTIONS
- PRODUCTION SOLUTIONS

PHOTO



Inkjet & Laser Paper
PROOF, PHOTO & PRODUCTION MEDIA

Water based inks	Full/Eco/Mild-Solvent inks	UV-curable inks	Laser printers	B1 certified	Outdoor-Applications
------------------	----------------------------	-----------------	----------------	--------------	----------------------



Printing media for colour inkjet printers

NEW

part no.

unit

size

core

recommended for

Application and icc-supported profiles with the following product segments:

EFI Photo Classic Baryt 4270 Satin

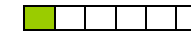
(270 g/m²)

Fibre-based FineArt paper with ultra smooth surface and the look and feel of traditional baryt paper. Ideal for Displays, FineArt, B/W and coloured reproductions, exhibition works.

This EFI Photo Paper does comply with DIN 6738, ISO 9706, ANSI Z 39.48-1992 neutral sized, neutral PH value, acid free and therefore extremely age resistant. It offers the highest archival class and has a life time of several 100 years.

***) All roll units are supplied with each two adapters 3" to 2" core.**

6739210297	50 sheets	DIN A4		
6739297420	50 sheets	DIN A3		
6739330483	50 sheets	DIN A3+		
6739420594	50 sheets	DIN A2		
6739432016	roll	43,2 cm x 15 m (17")	3" *)	
6739610016	roll	61,0 cm x 15 m (24")	3" *)	
6739914016	roll	91,4 cm x 15 m (36")	3" *)	
6739107016	roll	106,7 cm x 15 m (42")	3" *)	
6739111016	roll	111,8 cm x 15 m (44")	3" *)	
6739999999	Sample	43,2 cm x 5 m (17")	3" *)	



70,00 €
140,00 €
168,50 €
280,10 €
126,70 €
178,80 €
268,30 €
313,40 €
327,90 €
38,00 €

- PROOFING SOLUTIONS
- PHOTO SOLUTIONS
- PRODUCTION SOLUTIONS

PHOTO



Inkjet & Laser Paper
PROOF, PHOTO & PRODUCTION MEDIA

Water based inks	Full/Eco/Mid-Solvent inks	UV-curable inks	Laser printers	B1 certified	Outdoor-Applications
------------------	---------------------------	-----------------	----------------	--------------	----------------------



Printing media for colour inkjet printers

NEW

part no.

unit

size

core

recommended for

Application and icc-supported profiles with the following product segments:

EFI Photo FineArt 'Handmade' Water Color Paper

(140 g/m²)

For artistic reproductions with high color fidelity, acid free.
This EFI Photo Paper does comply with DIN 6738, ISO 9706, ANSI Z 39.48-1992 neutral sized, neutral PH value, acid free and therefore extremely age resistant. It offers the highest archival class and has a life time of several 100 years.

6302210297	50 sheets	DIN A4					
6302297420	50 sheets	DIN A3					
6302330483	50 sheets	DIN A3+					
6302420594	50 sheets	DIN A2					
6302594841	20 sheets	DIN A1					
6302841189	20 sheets	DIN A0					
6302432021	roll	43,2 cm x 20 m (17")	3"				
6302559020	roll	55,9 cm x 20 m (22")	2"				
6302559021	roll	55,9 cm x 20 m (22")	3"				
6302914020	roll	91,4 cm x 20 m (36")	2"				
6302914021	roll	91,4 cm x 20 m (36")	3"				
6302111020	roll	111,8 cm x 20 m (44")	2"				
6302111021	roll	111,8 cm x 20 m (44")	3"				
6302999999	Sample	55,9 cm x 5 m (22")	2"				

Water based inks	Full/Eco/Mid-Solvent inks	UV-curable inks	Laser printers	B1 certified	Outdoor-Applications
------------------	---------------------------	-----------------	----------------	--------------	----------------------

40,00 €
80,00 €
102,10 €
160,10 €
128,80 €
257,60 €
102,50 €
133,30 €
133,30 €
222,40 €
222,40 €
266,90 €
266,90 €

- PROOFING SOLUTIONS
- PHOTO SOLUTIONS
- PRODUCTION SOLUTIONS

EFI Photo FineArt Canvas

(520 μ)

Textile material for high quality prints, very suitable for framing, ideal for artistic reproductions e.g. 'oil' paintings, aquarelles, high quality photos and images.

***) All roll units are supplied with each two adapters 3" to 2" core.**

6308210297	10 sheets	DIN A4					
6308297420	10 sheets	DIN A3					
6308330483	10 sheets	DIN A3+					
6308420594	10 sheets	DIN A2					
6308594841	10 sheets	DIN A1					
6308841189	10 sheets	DIN A0					
6308432016	roll	43,2 cm x 15 m (17")	3"				
6308610015	roll	61,0 cm x 15 m (24")	2"				
6308610016	roll	61,0 cm x 15 m (24")	3"				
6308914015	roll	91,4 cm x 15 m (36")	2"				
6308914016	roll	91,4 cm x 15 m (36")	3"				
6308111015	roll	111,8 cm x 15 m (44")	2"				
6308111016	roll	111,8 cm x 15 m (44")	3"				
6308127015	roll	127,0 cm x 15 m (50")	2"				
6308999998	Sample	43,2 cm x 5 m (17")	3" *)				

Water based inks	Full/Eco/Mid-Solvent inks	UV-curable inks	Laser printers	B1 certified	Outdoor-Applications
------------------	---------------------------	-----------------	----------------	--------------	----------------------

18,50 €
37,00 €
56,40 €
74,00 €
148,00 €
296,00 €
164,00 €
230,70 €
230,70 €
346,50 €
346,50 €
424,40 €
424,40 €
481,80 €

- PROOFING SOLUTIONS
- PHOTO SOLUTIONS
- PRODUCTION SOLUTIONS

PHOTO



Inkjet & Laser Paper
PROOF, PHOTO & PRODUCTION MEDIA

Water based inks	Full/Eco/Mid-Solvent inks	UV-curable inks	Laser printers	B1 certified	Outdoor-Applications
------------------	---------------------------	-----------------	----------------	--------------	----------------------



Printing media for colour inkjet printers

NEW

part no.

unit

size

core

recommended for

Application and icc-supported profiles with the following product segments:

EFI Photo FineArt Cotton Paper

(295 g/qm)

Natural white Fine Art Rag (100% Cotton), with high light stability and aging resistance. Acid free. For Digital photos and FineArt reproductions (Aquarelles, Pastel drawings, etc). Very homogenous surface structure with a matt coating.

This EFI Photo Paper does comply with DIN 6738, ISO 9706, ANSI Z 39.48-1992 neutral sized, neutral PH value, acid free and therefore extremely age resistant. It offers the highest archival class and has a life time of several 100 years.

***) All roll units are supplied with each two adapters 3" to 2" core.**

6736210297	50 sheets	DIN A4		
6736297420	50 sheets	DIN A3		
6736330483	50 sheets	DIN A3+		
6736420594	50 sheets	DIN A2		
6736432016	roll	43,2 cm x 15 m (17")	3" *	
6736610016	roll	61,0 cm x 15 m (24")	3" *	
6736914016	roll	91,4 cm x 15 m (36")	3" *	
6736107016	roll	106,7 cm x 15 m (42")	3" *	
6736111016	roll	111,8 cm x 15 m (44")	3" *	
6736999999	Sample	43,2 cm x 5 m (17")	3" *	



77,40 €
154,80 €
227,30 €
309,60 €
144,60 €
205,70 €
309,00 €
360,60 €
381,30 €
48,50 €

- PROOFING SOLUTIONS
- PHOTO SOLUTIONS
- PRODUCTION SOLUTIONS

Further EFI printing media for Photo applications can be found in the following product segments:

- PROOFING SOLUTIONS
- PRODUCTION SOLUTIONS

PRODUCTION



Inkjet & Laser Paper
PROOF, PHOTO & PRODUCTION MEDIA

Water based inks
Full/Eco/Mid-Solvent inks
UV-curable inks
Laser printers
B1 certified
Outdoor-Applications



Printing media for colour inkjet printers

NEW

part no.

unit

size

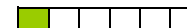
core

recommended for

Application and icc-supported profiles with the following product segments:

EFI Production Paper 1085Economy Matt

(90 g/m²)



The mark of responsible forestry

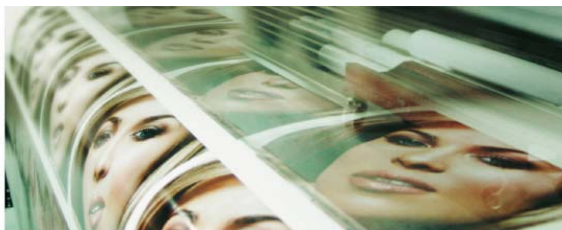
High resolution coated matt paper, high resolution, 2880 dpi, for production applications.

***) All roll units are supplied with each two adapters 3" to 2" core.**

6726210297	200 sheets	DIN A4		17,40 €
6726297420	200 sheets	DIN A3		34,80 €
6726330483	200 sheets	DIN A3+		44,20 €
6726420594	200 sheets	DIN A2		69,60 €
6726480628	200 sheets	DIN A2+		83,40 €
6726594841	200 sheets	DIN A1		139,20 €
6726625914	200 sheets	DIN A1+		158,20 €
6726841118	200 sheets	DIN A0		278,40 €
6726914125	200 sheets	DIN A0++		316,30 €
6726432071	roll	43,2 cm x 70 m (17")	3" *)	21,30 €
6726610070	roll	61,0 cm x 70 m (24")	2"	30,00 €
6726914070	roll	91,4 cm x 70 m (36")	2"	45,00 €
6726107070	roll	106,7 cm x 70 m (42")	2"	52,80 €
6726111070	roll	111,8 cm x 70 m (44")	2"	54,90 €
6726127070	roll	127,0 cm x 70 m (50")	2"	62,30 €
6726137070	roll	137,0 cm x 70 m (54")	2"	67,40 €
6726152070	roll	152,4 cm x 70 m (60")	2"	74,80 €
6726999998	Sample	43,2 cm x 5 m (17")	3" *)	3,90 €

- PROOFING SOLUTIONS
- PHOTO SOLUTIONS
- PRODUCTION SOLUTIONS

PRODUCTION



Inkjet & Laser Paper
PROOF, PHOTO & PRODUCTION MEDIA

Water based inks	Full/Eco/Mid-Solvent inks	UV-curable inks	Laser printers	B1 certified	Outdoor-Applications
------------------	---------------------------	-----------------	----------------	--------------	----------------------



Printing media for colour inkjet printers

NEW

part no.

unit

size

core

recommended for

Application and icc-supported profiles with the following product segments:

EFI Production Premium Paper 1120 Matt

(120 g/m²)



High resolution coated matt paper, very high resolution, 5760 dpi, and a very wide colour gamut, for production applications.



The mark of responsible forestry

***) All roll units are supplied with each two adapters 3" to 2" core.**

6702210297	200 sheets	DIN A4		
6702241340	200 sheets	SUPER A4		
6702297420	200 sheets	DIN A3		
6702330483	200 sheets	DIN A3+		
6702420594	200 sheets	DIN A2		
6702594841	200 sheets	DIN A1		
6702625914	200 sheets	DIN A1+		
6702329015	roll	32,9 cm x 15 m (13")	2"	
6702432035	roll	43,2 cm x 35 m (17")	3" *)	
6702610035	roll	61,0 cm x 35 m (24")	2"	
6702914035	roll	91,4 cm x 35 m (36")	2"	
6702107035	roll	106,7 cm x 35 m (42")	2"	
6702111035	roll	111,8 cm x 35 m (44")	2"	
6702127035	roll	127,0 cm x 35 m (50")	2"	
6702135035	roll	135,0 cm x 35 m (53,125")	3" *)	
6702137035	roll	137,0 cm x 35 m (54")	2"	
6702152035	roll	152,4 cm x 35 m (60")	2"	
6702162036	roll	162,6 cm x 35 m (64")	3" *)	



25,60 €
38,70 €
51,20 €
65,40 €
102,40 €
204,80 €
234,30 €
16,90 €
24,80 €
34,90 €
52,20 €
60,90 €
63,90 €
72,50 €
77,10 €
78,40 €
87,10 €
93,20 €

- PROOFING SOLUTIONS
- PHOTO SOLUTIONS
- PRODUCTION SOLUTIONS

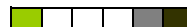
6702999998	Sample	43,2 cm x 5 m (17")	3" *)	5,20 €
------------	---------------	---------------------	-------	--------

EFI Production Textile-Banner 1155

(155 g/qm)

High-grade, water-resistant textile material (100% Polyester) with special, high-resolution matt inkjet coating. For displays, banners and exciting product presentations. Due to the water resistance (only with pigmented inks) and the B1 certification, the EFI Textile Banner is suitable for inside and outdoor applications. Also suitable for roll-up and other display-systems.

6746432026	roll	43,2 cm x 25 m (17")	3" *)	
6746610026	roll	61,0 cm x 25 m (24")	3" *)	
6746914026	roll	91,4 cm x 25 m (36")	3" *)	
6746107026	roll	106,7 cm x 25 m (42")	3" *)	
6746127026	roll	127,0 cm x 25 m (50")	3" *)	
6746137026	roll	137,0 cm x 25 m (54")	3" *)	
6746152026	roll	152,4 cm x 25 m (60")	3" *)	



114,50 €
157,40 €
230,40 €
268,90 €
320,00 €
345,20 €
383,00 €

- PROOFING SOLUTIONS
- PHOTO SOLUTIONS
- PRODUCTION SOLUTIONS

6746999999	Sample	43,2 cm x 5 m (17")	3" *)	25,00 €
------------	---------------	---------------------	-------	---------

***) All roll units are supplied with each two adapters 3" to 2" core.**

PRODUCTION



Inkjet & Laser Paper
PROOF, PHOTO & PRODUCTION MEDIA

Water based inks
Full/Eco/Mild-Solvent inks
UV-curable inks
Laser printers
B1 certified
Outdoor-Applications



Printing media for colour inkjet printers

NEW

part no.

unit

size

core

recommended for

Application and icc-supported profiles with the following product segments:

EFI Production Premium Paper 1200 Semiglossy

(200 g/m²)



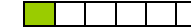
PE microporous coated paper, very high resolution, 2880 dpi, suitable for both hot and cold lamination, universal suitability for dye and pigmented inks, very wide colour gamut.



PEFC™
PEFC/04-31-1091

***) All roll units are supplied with each two adapters 3" to 2" core.**

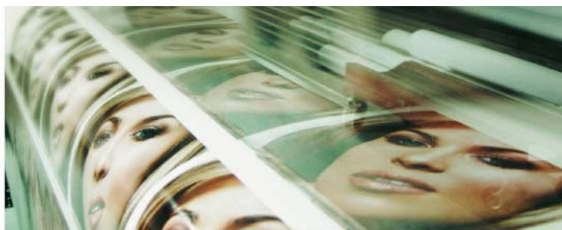
6704210297	100 sheets		DIN A4		
6704297420	100 sheets		DIN A3		
6704330483	100 sheets		DIN A3+		
6704420594	100 sheets		DIN A2		
6704480628	100 sheets		DIN A2+		
6704594841	100 sheets		DIN A1		
6704625914	100 sheets		DIN A1+		
6704841118	100 sheets		DIN A0		
6704914125	100 sheets		DIN A0++		
6704329030	roll	32,9 cm x 30 m (13")		2"	
6704432031	roll	43,2 cm x 30 m (17")		3" *)	
6704610030	roll	61,0 cm x 30 m (24")		2"	
6704914030	roll	91,4 cm x 30 m (36")		2"	
6704107030	roll	106,7 cm x 30 m (42")		2"	
6704111030	roll	111,8 cm x 30 m (44")		2"	
6704127030	roll	127,0 cm x 30 m (50")		2"	
6704137030	roll	137,0 cm x 30 m (54")		2"	
6704152030	roll	152,4 cm x 30 m (60")		2"	
6704162031	roll	162,6 cm x 30 m (64")		3" *)	
6704999998	Sample	43,2 cm x 5 m (17")		3" *)	



42,70 €
85,40 €
108,70 €
170,80 €
205,30 €
341,60 €
388,90 €
683,20 €
777,70 €
45,70 €
59,90 €
84,50 €
126,50 €
147,80 €
154,80 €
175,80 €
190,00 €
211,00 €
225,40 €

- PROOFING SOLUTIONS
- PHOTO SOLUTIONS
- PRODUCTION SOLUTIONS

PRODUCTION



Inkjet & Laser Paper
PROOF, PHOTO & PRODUCTION MEDIA

Water based inks
Full/Eco/Mild-Solvent inks
UV-curable inks
Laser printers
B1 certified
Outdoor-Applications



Printing media for colour inkjet printers

NEW part no. unit size core

recommended for

Application and icc-supported profiles with the following product segments:

EFI Production Premium 1200XF Semiglossy

(200 g/m²)



PE microporous coated paper, very high resolution, 5760 dpi, suitable for both hot and cold lamination, universal suitability for dye and pigmented inks, very wide colour gamut. Compatible with ISO 12647-7



PEFCTM
PEFC/04-31-1091

***) All roll units are supplied with each two adapters 3" to 2" core.**

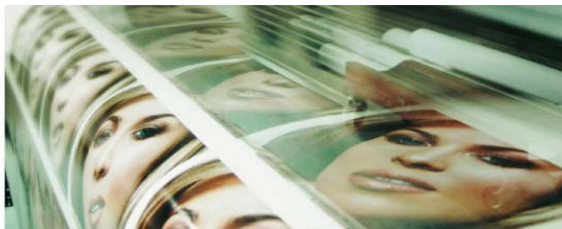
NEW	6724210297	100 sheets	DIN A4	
NEW	6724297420	100 sheets	DIN A3	
NEW	6724330483	100 sheets	DIN A3+	
NEW	6724420594	100 sheets	DIN A2	
NEW	6724480628	100 sheets	DIN A2+	
NEW	6724594841	100 sheets	DIN A1	
NEW	6724625914	100 sheets	DIN A1+	
NEW	6724841118	100 sheets	DIN A0	
NEW	6724914125	100 sheets	DIN A0++	
NEW	6724329031	roll	32,9 cm x 30 m (13")	3" *)
NEW	6724432031	roll	43,2 cm x 30 m (17")	3" *)
NEW	6724610031	roll	61,0 cm x 30 m (24")	3" *)
NEW	6724914031	roll	91,4 cm x 30 m (36")	3" *)
NEW	6724107031	roll	106,7 cm x 30 m (42")	3" *)
NEW	6724111031	roll	111,8 cm x 30 m (44")	3" *)
NEW	6724127031	roll	127,0 cm x 30 m (50")	3" *)
NEW	6724137031	roll	137,0 cm x 30 m (54")	3" *)
NEW	6724152031	roll	152,4 cm x 30 m (60")	3" *)
NEW	6724162031	roll	162,6 cm x 30 m (64")	3" *)
NEW	6724999998	Sample	43,2 cm x 5 m (17")	3" *)



42,70 €
85,40 €
108,70 €
170,80 €
205,30 €
341,60 €
388,90 €
683,20 €
777,70 €
45,70 €
59,90 €
84,50 €
126,50 €
147,80 €
154,80 €
175,80 €
190,00 €
211,00 €
225,40 €
12,30 €

- PROOFING SOLUTIONS
- PHOTO SOLUTIONS
- PRODUCTION SOLUTIONS

PRODUCTION



Inkjet & Laser Paper
PROOF, PHOTO & PRODUCTION MEDIA

Water based inks
Full/Eco/Mild-Solvent inks
UV-curable inks
Laser printers
B1 certified
Outdoor-Applications



Printing media for colour inkjet printers

NEW

part no.

unit

size

core

recommended for

Application and icc-supported profiles with the following product segments:

EFI Production Premium Paper 2200 Glossy

(200 g/m²)



PE microporous coated paper, very high resolution, 2880 dpi, suitable for both hot and cold lamination, universal suitability for dye and pigmented inks, very wide colour gamut.



PEFCTM
PEFC/04-31-1091

***) All roll units are supplied with each two adapters 3" to 2" core.**



6706210297	100 sheets	DIN A4	
6706297420	100 sheets	DIN A3	
6706330483	100 sheets	DIN A3+	
6706420594	100 sheets	DIN A2	
6706594841	100 sheets	DIN A1	
6706329010	roll	32,9 cm x 10 m (13")	2"
6706360030	roll	36,0 cm x 30 m (14,17")	2"
6706432031	roll	43,2 cm x 30 m (17")	3" *)
6706610030	roll	61,0 cm x 30 m (24")	2"
6706914030	roll	91,4 cm x 30 m (36")	2"
6706107030	roll	106,7 cm x 30 m (42")	2"
6706112030	roll	111,8 cm x 30 m (44")	2"
6706127030	roll	127,0 cm x 30 m (50")	2"
6706137030	roll	137,0 cm x 30 m (54")	2"
6706152030	roll	152,4 cm x 30 m (60")	2"
6706162031	roll	162,6 cm x 30 m (64")	3" *)

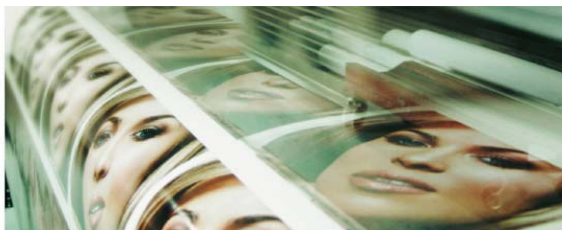
42,70 €
85,40 €
108,70 €
170,80 €
341,60 €
29,80 €
49,90 €
59,90 €
84,50 €
126,50 €
147,80 €
154,80 €
175,80 €
190,00 €
211,00 €
225,40 €

6706999998	Sample	43,2 cm x 5 m (17")	3" *)
------------	--------	---------------------	-------

12,30 €

- PROOFING SOLUTIONS
- PHOTO SOLUTIONS
- PRODUCTION SOLUTIONS

PRODUCTION



Inkjet & Laser Paper
PROOF, PHOTO & PRODUCTION MEDIA

Water based inks
Full/Eco/Mid-Solvent inks
UV-curable inks
Laser printers
B1 certified
Outdoor-Applications



Printing media for colour inkjet printers

NEW

part no.

unit

size

core

recommended for

Application and icc-supported profiles with the following product segments:

EFI Production Premium 2200XF Glossy

(200 g/m²)



PE microporous coated paper, very high resolution, 5760 dpi, suitable for both hot and cold lamination, universal suitability for dye and pigmented inks, very wide colour gamut. Compatible with ISO 12647-7



PEFC/04-31-1091

***) All roll units are supplied with each two adapters 3" to 2" core.**

NEW	6727210297	100 sheets	DIN A4		
NEW	6727297420	100 sheets	DIN A3		
NEW	6727330483	100 sheets	DIN A3+		
NEW	6727420594	100 sheets	DIN A2		
NEW	6727594841	100 sheets	DIN A1		
NEW	6727329010	roll	32,9 cm x 10 m (13")	2"	
NEW	6727360031	roll	36,0 cm x 30 m (14,17")	3" *	
NEW	6727432031	roll	43,2 cm x 30 m (17")	3" *	
NEW	6727610031	roll	61,0 cm x 30 m (24")	3" *	
NEW	6727914031	roll	91,4 cm x 30 m (36")	3" *	
NEW	6727107031	roll	106,7 cm x 30 m (42")	3" *	
NEW	6727112031	roll	111,8 cm x 30 m (44")	3" *	
NEW	6727127031	roll	127,0 cm x 30 m (50")	3" *	
NEW	6727137031	roll	137,0 cm x 30 m (54")	3" *	
NEW	6727152031	roll	152,4 cm x 30 m (60")	3" *	
NEW	6727162031	roll	162,6 cm x 30 m (64")	3" *	



42,70 €
85,40 €
108,70 €
170,80 €
341,60 €
29,80 €
49,90 €
59,90 €
84,50 €
126,50 €
147,80 €
154,80 €
175,80 €
190,00 €
211,00 €
225,40 €

- PROOFING SOLUTIONS
- PHOTO SOLUTIONS
- PRODUCTION SOLUTIONS

NEW	6727999998	Sample	43,2 cm x 5 m (17")	3" *	
-----	------------	--------	---------------------	------	--

12,30 €

EFI Production Paper 1090ADH Matt

(190 g/m²)

120 g/m² w/o paperback
190 g/m² with paperback

Matt paper with very high resolution, 2880 dpi, selfADHesive. Universal suitability for all thermal and piezo printers, for production applications.

***) All roll units are supplied with each two adapters 3" to 2" core.**

6707210297	50 sheets	DIN A4			
6707297420	50 sheets	DIN A3			
6707420594	100 sheets	DIN A2			
6707432021	roll	43,2 cm x 20 m (17")	3" *		
6707610020	roll	61,0 cm x 20 m (24")	2"		
6707914020	roll	91,4 cm x 20 m (36")	2"		
6707111020	roll	111,8 cm x 20 m (44")	2"		
6707127020	roll	127,0 cm x 20 m (50")	2"		



21,20 €
42,40 €
169,00 €
48,80 €
68,80 €
103,20 €
126,10 €
143,20 €

- PROOFING SOLUTIONS
- PHOTO SOLUTIONS
- PRODUCTION SOLUTIONS

6707999998	Sample	43,2 cm x 5 m (17")	3" *		
------------	--------	---------------------	------	--	--

17,50 €

PRODUCTION



Inkjet & Laser Paper
PROOF, PHOTO & PRODUCTION MEDIA

Water based inks
Full/Eco/Mild-Solvent inks
UV-curable inks
Laser printers
B1 certified
Outdoor-Applications

POWERED BY



Printing media for colour inkjet printers

NEW

part no.

unit

size

core

recommended for

Application and icc-supported profiles with the following product segments:

EFI Production Paper 1200ADH Semiglossy

200 g/m² w/o backing
280 g/m² with backing

PE microporous coated paper, very high resolution, 2880 dpi, selfADHesive, universal for dye and pigmented inks, very wide colour gamut. The ideal and high quality selfADHesive semiglossy paper for production and presentation applications.



***) All roll units are supplied with each two adapters 3" to 2" core.**

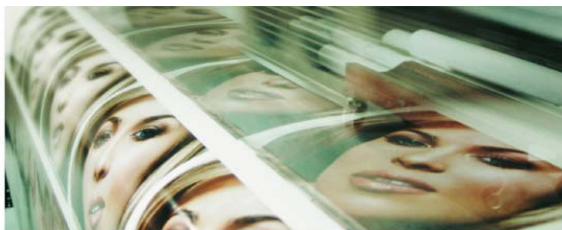
6708210297	50 sheets	DIN A4	
6708297420	50 sheets	DIN A3	
6708330483	50 sheets	DIN A3+	
6708420594	100 sheets	DIN A2	
6708480628	100 sheets	DIN A2+	
6708594841	100 sheets	DIN A1	
6708625914	100 sheets	DIN A1+	
6708841118	100 sheets	DIN A0	
6708914125	100 sheets	DIN A0++	
6708432021	roll	43,2 cm x 20 m (17")	3" *)
6708610021	roll	61,0 cm x 20 m (24")	3" *)
6708914021	roll	91,4 cm x 20 m (36")	3" *)
6708107021	roll	106,7 cm x 20 m (42")	3" *)
6708111021	roll	111,8 cm x 20 m (44")	3" *)
6708127021	roll	127,0 cm x 20 m (50")	3" *)
6708999998	Sample	43,2 cm x 5 m (17")	3" *)



38,20 €
76,40 €
97,30 €
305,10 €
367,80 €
610,20 €
696,80 €
1.220,40 €
1.393,60 €
87,80 €
123,90 €
185,60 €
216,60 €
227,00 €
257,80 €

- PROOFING SOLUTIONS
- PHOTO SOLUTIONS
- PRODUCTION SOLUTIONS

PRODUCTION



Inkjet & Laser Paper
PROOF, PHOTO & PRODUCTION MEDIA

Water based inks	Full/Eco/Mild-Solvent inks	UV-curable inks	Laser printers	B1 certified	Outdoor-Applications
------------------	----------------------------	-----------------	----------------	--------------	----------------------



Printing media for colour inkjet printers

NEW

part no.

unit

size

core

recommended for

Application and icc-supported profiles with the following product segments:

EFI Production Paper 2200ADH Glossy

(200 g/m²)

200 g/m² w/o backing
280 g/m² with backing

PE microporous coated paper, very high resolution, 2880 dpi, selfADHesive, universal for dye and pigmented inks, very wide colour gamut. The ideal and high quality selfADHesive glossy paper for production and presentation applications.



***) All roll units are supplied with each two adapters 3" to 2" core.**

6709210297	50 sheets	DIN A4	
6709297420	50 sheets	DIN A3	
6709330483	50 sheets	DIN A3+	
6709420594	100 sheets	DIN A2	
6709480628	100 sheets	DIN A2+	
6709594841	100 sheets	DIN A1	
6709625914	100 sheets	DIN A1+	
6709841118	100 sheets	DIN A0	
6709914125	100 sheets	DIN A0++	
6709432021	roll	43,2 cm x 20 m (17")	3" *)
6709610021	roll	61,0 cm x 20 m (24")	3" *)
6709914021	roll	91,4 cm x 20 m (36")	3" *)
6709107021	roll	106,7 cm x 20 m (42")	3" *)
6709111021	roll	111,8 cm x 20 m (44")	3" *)
6709127021	roll	127,0 cm x 20 m (50")	3" *)



38,20 €
76,40 €
97,30 €
305,10 €
367,80 €
610,20 €
696,80 €
1.220,40 €
1.393,60 €
87,80 €
123,90 €
185,60 €
216,60 €
227,00 €
257,80 €

- PROOFING SOLUTIONS
- PHOTO SOLUTIONS
- PRODUCTION SOLUTIONS

6709999998	Sample	43,2 cm x 5 m (17")	3" *)	24,10 €
------------	---------------	---------------------	-------	----------------

EFI Production Paper 1300ADH Vinyl

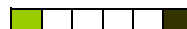
(300 µ)

175 g/m² w/o paperback
315 g/m² with paperback

Self-adhesive polypropylene, matt, for all uneven surfaces. Very good suitability for indoor and outdoor production applications.

***) All roll units are supplied with each two adapters 3" to 2" core.**

6710210297	50 sheets	DIN A4	
6710297420	50 sheets	DIN A3	
6710330483	50 sheets	DIN A3+	
6710420594	100 sheets	DIN A2	
6710432021	roll	43,2 cm x 20 m (17")	3" *)
6710610020	roll	61,0 cm x 20 m (24")	2"
6710914020	roll	91,4 cm x 20 m (36")	2"
6710107020	roll	106,7 cm x 20 m (42")	2"
6710112020	roll	111,8 cm x 20 m (44")	2"
6710127020	roll	127,0 cm x 20 m (50")	2"
6710137020	roll	137,2 cm x 20 m (54")	2"
6710152020	roll	152,4 cm x 20 m (60")	2"



29,80 €
59,60 €
76,10 €
237,80 €
62,10 €
87,60 €
131,20 €
153,20 €
160,60 €
182,30 €
197,00 €
218,80 €

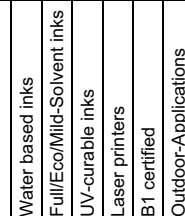
- PROOFING SOLUTIONS
- PHOTO SOLUTIONS
- PRODUCTION SOLUTIONS

6710999998	Sample	43,2 cm x 5 m (17")	3" *)	18,50 €
------------	---------------	---------------------	-------	----------------

PRODUCTION



Inkjet & Laser Paper
PROOF, PHOTO & PRODUCTION MEDIA



Printing media for colour inkjet printers

NEW

part no.

unit

size

core

recommended for

Application and icc-supported profiles with the following product segments:

EFI Production Paper 1510 Vinyl Banner

(510 µ)

Very heavy vinyl (tarpaulin material), non self-adhesive, water resistant in combination with pigmented inks. Very good suitability also for grommeting.

***) All roll units are supplied with each two adapters 3" to 2" core.**

6712432016	roll	43,2 cm x 15 m (17")	3" *)	105,70 €
6712610015	roll	61,0 cm x 15 m (24")	2"	149,20 €
6712914015	roll	91,4 cm x 15 m (36")	2"	223,50 €
6712107015	roll	106,7 cm x 15 m (42")	2"	260,90 €
6712112015	roll	111,8 cm x 15 m (44")	2"	273,40 €
6712127015	roll	127,0 cm x 15 m (50")	2"	310,50 €
6712137015	roll	137,2 cm x 15 m (54")	2"	335,20 €
6712152015	roll	152,4 cm x 15 m (60")	2"	373,10 €



105,70 €
149,20 €
223,50 €
260,90 €
273,40 €
310,50 €
335,20 €
373,10 €

- PROOFING SOLUTIONS
- PHOTO SOLUTIONS
- PRODUCTION SOLUTIONS

6712999998	Sample	43,2 cm x 5 m (17")	3" *)	35,90 €
------------	---------------	---------------------	-------	----------------

35,90 €

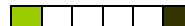
EFI Production Paper 1150 Tyvek Banner

(150 g/m²)

Strong, tear proof, paper-like product, e. g. for banner printing and other outdoor applications.

***) All roll units are supplied with each two adapters 3" to 2" core.**

6713210297	50 sheets	DIN A4		38,00 €
6713297420	50 sheets	DIN A3		76,00 €
6713330483	50 sheets	DIN A3+		97,10 €
6713420594	100 sheets	DIN A2		303,90 €
6713329010	roll	32,9 cm x 10 m (13")	2"	33,50 €
6713432021	roll	43,2 cm x 20 m (17")	3" *)	87,80 €
6713610020	roll	61,0 cm x 20 m (24")	2"	123,90 €
6713914020	roll	91,4 cm x 20 m (36")	2"	185,60 €
6713107020	roll	106,7 cm x 20 m (42")	2"	216,60 €
6713112020	roll	111,8 cm x 20 m (44")	2"	227,00 €
6713127020	roll	127,0 cm x 20 m (50")	2"	257,80 €
6713135020	roll	135,0 cm x 20 m (53,125")	3" *)	274,00 €
6713137020	roll	137,0 cm x 20 m (54")	2"	278,50 €



38,00 €
76,00 €
97,10 €
303,90 €
33,50 €
87,80 €
123,90 €
185,60 €
216,60 €
227,00 €
257,80 €
274,00 €
278,50 €

- PROOFING SOLUTIONS
- PHOTO SOLUTIONS
- PRODUCTION SOLUTIONS

6713999998	Sample	43,2 cm x 5 m (17")	3" *)	22,10 €
------------	---------------	---------------------	-------	----------------

22,10 €

PRODUCTION



Inkjet & Laser Paper
PROOF, PHOTO & PRODUCTION MEDIA

Water based inks	Full/Eco/Mild-Solvent inks	UV-curable inks	Laser printers	B1 certified	Outdoor-Applications
------------------	----------------------------	-----------------	----------------	--------------	----------------------



Printing media for colour inkjet printers

NEW	part no.	unit	size	core	recommended for	Application and icc-supported profiles with the following product segments:
-----	----------	------	------	------	-----------------	---

EFI Production Paper 1140 Backlit

(140 µ)

Matt translucent polyester film for indoor and outdoor applications in light boxes, especially suitable for applications under high humidity and condensation conditions, universal use, instant drying and water resistant.

***) All roll units are supplied with each two adapters 3" to 2" core.**

6714432021	roll	43,2 cm x 20 m (17")	3" *)
6714610020	roll	61,0 cm x 20 m (24")	2"
6714914020	roll	91,4 cm x 20 m (36")	2"
6714107020	roll	106,7 cm x 20 m (42")	2"
6714111020	roll	111,8 cm x 20 m (44")	2"
6714127020	roll	127,0 cm x 20 m (50")	2"
6714137020	roll	137,2 cm x 20 m (54")	2"
6714152020	roll	152,4 cm x 20 m (60")	2"



52,30 €
73,80 €
110,60 €
129,20 €
135,30 €
153,70 €
166,00 €
184,40 €

- PROOFING SOLUTIONS
- PHOTO SOLUTIONS
- PRODUCTION SOLUTIONS

6714999997	Sample	43,2 cm x 5 m (17")	3" *)
------------	--------	---------------------	-------

13,20 €

EFI Production Dot Film XF

(140 µ)

Universal clear film with short drying time for the production of film/color excerpts for offset and screen printing without chemistry. Very sharp plots, good dot gain control and outstanding dimensional stability. With all kinds of inks (dye and pigment) very high UV densities will be reached.

This new product consists of a very even surface.

***) All roll units are supplied with each two adapters 3" to 2" core.**

NEW	6723210297	100 sheets	DIN A4	
NEW	6723297420	100 sheets	DIN A3	
NEW	6723330483	100 sheets	DIN A3+	
NEW	6723420594	100 sheets	DIN A2	
NEW	6723420015	roll	42,0 cm x 15,0 m (16,5")	2"
NEW	6723432031	roll	43,2 cm x 30,5 m (17")	3" *)
NEW	6723457030	roll	45,7 cm x 30,5 m (18")	2"
NEW	6723610030	roll	61,0 cm x 30,5 m (24")	2"
NEW	6723914030	roll	91,4 cm x 30,5 m (36")	2"
NEW	6723107030	roll	106,7 cm x 30,5 m (42")	2"
NEW	6723111030	roll	111,8 cm x 30,5 m (44")	2"
NEW	6723127030	roll	127,0 cm x 30,5 m (50")	2"
NEW	6723137030	roll	137,0 cm x 30,5 m (54")	2"
NEW	6723152030	roll	152,4 cm x 30,5 m (60")	2"



72,60 €
145,20 €
185,80 €
290,40 €
70,70 €
147,60 €
156,20 €
208,40 €
312,30 €
364,40 €
382,00 €
434,90 €
470,60 €
522,50 €

- PROOFING SOLUTIONS
- PHOTO SOLUTIONS
- PRODUCTION SOLUTIONS

NEW	6723999998	Sample	43,2 cm x 5 m (17")	3" *)
-----	------------	--------	---------------------	-------

25,60 €

Further EFI printing media for Production applications can be found in the following product segments:

- PROOFING SOLUTIONS
- PHOTO SOLUTIONS



Inkjet & Laser Paper
PROOF, PHOTO & PRODUCTION MEDIA

Water based inks
Full/Eco/Mild-Solvent inks
UV-curable inks
Laser printers
B1 certified
Outdoor-Applications



Printing media for Solvent, Eco-/Mild-Solvent and UV-curable printers

NEW	part no.	unit	size	core	recommended for
-----	----------	------	------	------	-----------------

EFI Production ecoS Paper G140 Glossy

(140 g/m²)



High resolution coated photo like glossy paper, instant dry, for versatile indoor- and outdoor applications

ecoS benefits:

- * For photorealistic prints
- * For indoor and outdoor applications
- * Outdoor durability up to 2 years without laminating
- * Water-resistant
- * Suitable for all types of solvent and UV inks

6718610031	roll	61,0 cm x 30 m (24")	3"	
6718914031	roll	91,4 cm x 30 m (36")	3"	
6718107031	roll	106,7 cm x 30 m (42")	3"	
6718127031	roll	127,0 cm x 30 m (50")	3"	
6718137031	roll	137,0 cm x 30 m (54")	3"	
6718152031	roll	152,4 cm x 30 m (60")	3"	
6718162031	roll	162,6 cm x 30 m (64")	3"	



36,50 €
57,30 €
66,90 €
76,10 €
81,80 €
91,00 €
97,10 €

- PROOFING SOLUTIONS
- PHOTO SOLUTIONS
- PRODUCTION SOLUTIONS

6718999999	Sample	91,4 cm x 5 m (36")	3"	
------------	--------	---------------------	----	--

14,40 €

EFI Production ecoS Paper HG225 High-Gloss

(225 g/m²)



PEFCTM
PEFC/04-31-1091

High resolution PE-micro porous coated true photo high-gloss paper, instant dry, for versatile indoor- and outdoor photorealistic prints

ecoS benefits:

- * For true photorealistic prints
- * High color density
- * Excellent detail resolution
- * For indoor and outdoor applications
- * Outdoor durability up to 2 years without laminating
- * Smear resistant
- * Scratch resistant
- * Suitable for all types of solvent and UV inks

6719610031	roll	61,0 cm x 30 m (24")	3"	
6719914031	roll	91,4 cm x 30 m (36")	3"	
6719107031	roll	106,7 cm x 30 m (42")	3"	
6719127031	roll	127,0 cm x 30 m (50")	3"	
6719137031	roll	137,0 cm x 30 m (54")	3"	
6719152031	roll	152,4 cm x 30 m (60")	3"	



100,50 €
156,10 €
179,00 €
209,20 €
225,70 €
251,00 €

- PROOFING SOLUTIONS
- PHOTO SOLUTIONS
- PRODUCTION SOLUTIONS

6719999999	Sample	91,4 cm x 5 m (36")	3"	
------------	--------	---------------------	----	--

26,00 €

ecoS
PRODUCTION



efi

Inkjet & Laser Paper
PROOF, PHOTO & PRODUCTION MEDIA

Water based inks
Full/Eco/Mild-Solvent inks
UV-curable inks
Laser printers
B1 certified
Outdoor-Applications

POWERED BY
bestcolor
technology

Printing media for Solvent, Eco-/Mild-Solvent and UV-curable printers

NEW

part no.

unit

size

core

recommended for

EFI Production ecoS Paper SG225 Semiglossy

(225 g/m²)



PEFC™
PEFC/04-31-1091

High resolution PE-micro porous coated true photo semi-gloss paper, instant dry, for versatile indoor- and outdoor photorealistic prints

ecoS benefits:

- * For true photorealistic prints
- * High color density
- * Excellent detail resolution
- * For indoor and outdoor applications
- * Outdoor durability up to 2 years without laminating
- * Smear resistant
- * Scratch resistant
- * Suitable for all types of solvent and UV inks

6720610031	roll	61,0 cm x 30 m (24")	3"
6720914031	roll	91,4 cm x 30 m (36")	3"
6720107031	roll	106,7 cm x 30 m (42")	3"
6720127031	roll	127,0 cm x 30 m (50")	3"
6720137031	roll	137,0 cm x 30 m (54")	3"
6720152031	roll	152,4 cm x 30 m (60")	3"
6720999999	Sample	91,4 cm x 5 m (36")	3"



100,50 €
156,10 €
179,00 €
209,20 €
225,70 €
251,00 €

26,00 €

- PROOFING SOLUTIONS
- PHOTO SOLUTIONS
- PRODUCTION SOLUTIONS

EFI Production ecoS Paper BB135 Blueblack

(135 g/m²)



Multi play coated, weather and water resistant, high opaque poster paper. The back-side has a blue coating in order to cover well the underneath image.

ecoS benefits:

- * For photorealistic prints
- * For indoor and outdoor applications
- * Outdoor durability up to 2 years without laminating
- * Water-resistant
- * Suitable for all types of solvent and UV inks

6721610051	roll	61,0 cm x 50 m (24")	3"
6721914051	roll	91,4 cm x 50 m (36")	3"
6721107051	roll	106,7 cm x 50 m (42")	3"
6721127051	roll	127,0 cm x 50 m (50")	3"
6721137051	roll	137,0 cm x 50 m (54")	3"
6721152051	roll	152,4 cm x 50 m (60")	3"
6721162051	roll	162,6 cm x 50 m (64")	3"
6721999999	Sample	91,4 cm x 5 m (36")	3"



48,50 €
77,30 €
84,90 €
88,30 €
95,20 €
105,90 €
113,00 €

12,00 €

- PROOFING SOLUTIONS
- PHOTO SOLUTIONS
- PRODUCTION SOLUTIONS



Inkjet & Laser Paper
PROOF, PHOTO & PRODUCTION MEDIA

Water based inks	Full/Eco/Mild-Solvent inks	UV-curable inks	Laser printers	B1 certified	Outdoor-Applications
------------------	----------------------------	-----------------	----------------	--------------	----------------------



Printing media for Solvent, Eco-/Mild-Solvent and UV-curable printers

NEW	part no.	unit	size	core	recommended for
-----	----------	------	------	------	-----------------

EFI Production ecoS Backlit BLG150 Glossy

(150µ)



High resolution coated Backlit Film with a gloss effect for high quality prints. High color brilliants for day and night applications. In combination with the EFI XF Rip and EFI profiles this new product needs to be printed only once ("single-strike"). This is a real advantage compared to other Backlit printing solutions.

ecoS benefits:

- * Suitable for photo realistic prints
- * High color density
- * High gloss effect
- * Good scratch resistance
- * Very good resistibility against high moisture
- * Outdoor durability up to years without
- * Water resistant
- * Suitable for all solvent and UV inks

6725610021	roll	61,0 cm x 20 m (24")	3"	
6725914021	roll	91,4 cm x 20 m (36")	3"	
6725107021	roll	106,7 cm x 20 m (42")	3"	
6725127021	roll	127,0 cm x 20 m (50")	3"	
6725137021	roll	137,0 cm x 20m (54")	3"	
6725152021	roll	152,4 cm x 20 m (60")	3"	
6725162021	roll	162,6 cm x 20 m (64")	3"	
6725999999	Sample	91,4 cm x 5 m (36")	3"	



79,30 €
107,90 €
138,70 €
149,90 €
161,70 €
179,90 €
191,20 €

- PROOFING SOLUTIONS
- PHOTO SOLUTIONS
- PRODUCTION SOLUTIONS

EFI Production ecoS FineArt CV320 Canvas "Emotion"

(320 g/m²)

Cotton-polyester Canvas with high resolution coating for superior photo and fineArt prints; instant dry.

ecoS benefits:

- * For true photorealistic prints
- * For artistic portraits in exhibition quality
- * Very suitable for framing
- * Suitable for all types of solvent and UV inks

6722610016	roll	61,0 cm x 15 m (24")	3"	
6722914016	roll	91,4 cm x 15 m (36")	3"	
6722107016	roll	106,7 cm x 15 m (42")	3"	
6722127016	roll	127,0 cm x 15 m (50")	3"	
6722137016	roll	137,0 cm x 15 m (54")	3"	
6722152016	roll	152,4 cm x 15 m (60")	3"	
6722999999	Sample	91,4 cm x 5 m (36")	3"	



86,00 €
128,90 €
150,50 €
179,10 €
193,20 €
214,90 €

- PROOFING SOLUTIONS
- PHOTO SOLUTIONS
- PRODUCTION SOLUTIONS

LASER



Inkjet & Laser Paper
PROOF, PHOTO & PRODUCTION MEDIA

Water based inks	Full/Eco/Mid-Solvent inks	UV-curable inks	Laser printers	B1 certified	Outdoor-Applications
------------------	---------------------------	-----------------	----------------	--------------	----------------------



Printing media for colour laser printers and laser copiers

NEW

part no.

unit

size

core

recommended for

Application and icc-supported profiles with the following product segments:

EFI Laser Paper Starterkit

Contents: Each 3 sheets EFI Laser Paper ZP78, 162M, 162GL, 205GL, 102M, XF130, Photo Paper 250 Satin Raster and Magazin Print Paper 130

607500001 24 sheets

DIN A4



14,90 €

- PROOFING SOLUTIONS
- PHOTO SOLUTIONS
- PRODUCTION SOLUTIONS

EFI Laser Paper ZP 78 (Newspaper)

(78 g/m²)

Proof Paper similar to standard newspaper. Special surface treatment.

6734210297 200 sheets
6734241340 200 sheets
6734297420 200 sheets
6734305457 200 sheets
6734320450 200 sheets
6734328453 200 sheets
6734330483 200 sheets
6734420594 200 sheets

DIN A4
SUPER A4
DIN A3
A3 ÜF
SRA 3
A3 Nobi
DIN A3+
DIN A2



32,50 €
38,10 €
65,00 €
74,90 €
77,30 €
79,70 €
71,10 €
130,00 €

- PROOFING SOLUTIONS
- PHOTO SOLUTIONS
- PRODUCTION SOLUTIONS

EFI Laser Paper Matt102M

(102 g/m²)



Matt paper, for high color fidelity laser printing; suitable for duplex printing.



The mark of responsible forestry

6749210297 200 sheets
6749241340 200 sheets
6749297420 200 sheets
6749305457 200 sheets
6749320450 200 sheets
6749328453 200 sheets
6749328900 200 sheets
6749215120 200 sheets
6749328120 200 sheets

DIN A4
SUPER A4
DIN A3
A3 ÜF
SRA 3
A3 Nobi
328 x 900 mm Banner 1
215 x 1200 mm Banner 2
328 x 1200 mm Banner 3



10,50 €
14,80 €
21,00 €
24,80 €
25,30 €
25,00 €
54,50 €
47,70 €
72,80 €

- PROOFING SOLUTIONS
- PHOTO SOLUTIONS
- PRODUCTION SOLUTIONS

LASER



Inkjet & Laser Paper
PROOF, PHOTO & PRODUCTION MEDIA

Water based inks	Full/Eco/Mild-Solvent inks	UV-curable inks	Laser printers	B1 certified	Outdoor-Applications
recommended for					



Printing media for colour laser printers and laser copiers

NEW

part no.

unit

size

core

Application and icc-supported profiles with the following product segments:

EFI Laser Paper Matt 162M

(162 g/m²)



Matt paper, heavy-weight, for high color fidelity laser printing. Suitable for duplex printing.



The mark of responsible forestry

7105210297	200 sheets	DIN A4	
7105241340	200 sheets	SUPER A4	
7105297420	200 sheets	DIN A3	
7105305457	200 sheets	A3 ÜF	
7105320450	200 sheets	SRA 3	
7105328453	200 sheets	A3 Nobi	
7105330483	200 sheets	DIN A3+	
7105328900	200 sheets	328 x 900 mm Banner 1	
7105215120	200 sheets	215 x 1200 mm Banner 2	
7105328120	200 sheets	328 x 1200 mm Banner 3	

13,30 €
17,50 €
26,60 €
29,70 €
30,70 €
31,70 €
34,00 €
63,00 €
55,00 €
83,90 €

- PROOFING SOLUTIONS
- PHOTO SOLUTIONS
- PRODUCTION SOLUTIONS

LASER



Inkjet & Laser Paper
PROOF, PHOTO & PRODUCTION MEDIA

Water based inks
Full/Eco/Mid-Solvent inks
UV-curable inks
Laser printers
B1 certified
Outdoor-Applications



Printing media for colour laser printers and laser copiers

NEW

part no.

unit

size

core

recommended for

Application and icc-supported profiles with the following product segments:

EFI Laser Proof Paper XF115 Semimatt

(115 g/m²)



Doubleside coated semimatt paper, very suitable for e.g. proofs (as per ISO 12647-7) and high color fidelity printing



The mark of responsible forestry

6744210297	100 sheets	DIN A4	
6744210298	500 sheets	DIN A4	
6744241340	100 sheets	SUPER A4	
6744241341	500 sheets	SUPER A4	
6744297420	100 sheets	DIN A3	
6744297421	500 sheets	DIN A3	
6744305457	100 sheets	A3 ÜF	
6744305458	500 sheets	A3 ÜF	
6744320450	100 sheets	SRA 3	
6744320451	500 sheets	SRA 3	
6744328453	100 sheets	A3 Nobi	
6744328454	500 sheets	A3 Nobi	
6744330483	100 sheets	DIN A3+	
6744330484	500 sheets	DIN A3+	
6744311457	100 sheets	311 x 457 mm	
6744311458	500 sheets	311 x 457 mm	
6744420594	100 sheets	DIN A2	
6744328900	100 sheets	328 x 900 mm Banner 1	



13,90 €
49,50 €
21,30 €
74,60 €
27,80 €
99,00 €
31,00 €
108,20 €
32,20 €
111,50 €
32,70 €
115,00 €
39,20 €
137,00 €
32,30 €
113,00 €
55,60 €
68,10 €

PROOFING SOLUTIONS
PHOTO SOLUTIONS
PRODUCTION SOLUTIONS

EFI Laser Proof Paper XF130 Semimatt

(130 g/m²)



Doubleside coated semimatt paper, very suitable for e.g. proofs (as per ISO 12647-7/Fogra Validation Print) and high color fidelity printing (LAB 95,9; 0,2; -2,0)



The mark of responsible forestry

6735210297	100 sheets	DIN A4	
6735210298	500 sheets	DIN A4	
6735241340	100 sheets	SUPER A4	
6735241341	500 sheets	SUPER A4	
6735297421	500 sheets	DIN A3	
6735297420	100 sheets	DIN A3	
6735305457	100 sheets	A3 ÜF	
6735305458	500 sheets	A3 ÜF	
6735320450	100 sheets	SRA 3	
6735320451	500 sheets	SRA 3	
6735328453	100 sheets	A3 Nobi	
6735328454	500 sheets	A3 Nobi	
6735330483	100 sheets	DIN A3+	
6735330484	500 sheets	DIN A3+	
6735311457	100 sheets	311 x 457 mm	
6735311458	500 sheets	311 x 457 mm	
6735420594	100 sheets	DIN A2	
6735328900	100 sheets	328 x 900 mm Banner 1	



14,70 €
52,20 €
22,50 €
78,60 €
104,40 €
29,40 €
32,70 €
113,90 €
33,90 €
117,40 €
34,50 €
121,10 €
41,30 €
144,30 €
34,10 €
119,00 €
58,80 €
71,70 €

PROOFING SOLUTIONS
PHOTO SOLUTIONS
PRODUCTION SOLUTIONS

LASER



Inkjet & Laser Paper
PROOF, PHOTO & PRODUCTION MEDIA

Water based inks
Full/Eco/Mild-Solvent inks
UV-curable inks
Laser printers
B1 certified
Outdoor-Applications



Printing media for colour laser printers and laser copiers

NEW

part no.

unit

size

core

recommended for

Application and icc-supported profiles with the following product segments:

EFI Laser Magazine Print Paper 130 Semiglossy

(130 g/m²)



EFI Laser Magazin Print Paper 130 Semiglossy is a double sided coated paper, for high quality prints, e.g. dummy production of magazines, short run production etc. This paper has an excellent haptic feel due to its very smooth quality. It is very good foldable and therefore perfectly suitable for the above applications.



PEFC[™]
PEFC/04-31-1091

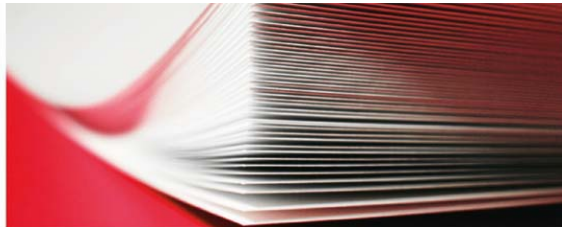
6748210297	200 sheets	DIN A4
6748210297	500 sheets	DIN A4
6748216280	200 sheets	8,5 cm x 11"
6748216281	500 sheets	8,5 cm x 11"
6748241340	200 sheets	SUPER A4
6748241341	500 sheets	SUPER A4
6748297420	200 sheets	DIN A3
6748297421	500 sheets	DIN A3
6748280432	200 sheets	11 cm x 17"
6748280433	500 sheets	12 cm x 17"
6748305457	200 sheets	A3 ÜF
6748305458	500 sheets	A3 ÜF
6748311457	200 sheets	311 x 457 mm
6748311458	500 sheets	311 x 457 mm
6748320450	200 sheets	SRA 3
6748320451	500 sheets	SRA 3
6748328453	200 sheets	A3 Nobi
6748328454	500 sheets	A3 Nobi
6748330483	200 sheets	DIN A3+
6748330484	500 sheets	DIN A3+
6748420594	200 sheets	DIN A2
6748328900	500 sheets	DIN A2



12,50 €
25,00 €
12,10 €
24,20 €
16,40 €
32,80 €
25,00 €
50,00 €
24,20 €
48,40 €
27,90 €
55,80 €
28,50 €
57,00 €
28,80 €
57,60 €
29,70 €
59,40 €
31,90 €
63,80 €
49,90 €
99,80 €

- PROOFING SOLUTIONS
- PHOTO SOLUTIONS
- PRODUCTION SOLUTIONS

LASER



Inkjet & Laser Paper
PROOF, PHOTO & PRODUCTION MEDIA

Water based inks	Full/Eco/Mild-Solvent inks	UV-curable inks	Laser printers	B1 certified	Outdoor-Applications
------------------	----------------------------	-----------------	----------------	--------------	----------------------



Printing media for colour laser printers and laser copiers

NEW

part no.

unit

size

core

recommended for

Application and icc-supported profiles with the following product segments:

EFI Laser Paper Glossy 162GL

(162 g/m²)

Glossy paper, heavy-weight, for high color fidelity laser printing. Suitable for single-side printing.

7106210297	200 sheets	DIN A4
7106241340	200 sheets	SUPER A4
7106297420	200 sheets	DIN A3
7106305457	200 sheets	A3 ÜF
7106320450	200 sheets	SRA 3
7106328453	200 sheets	A3 Nobi
7106330483	200 sheets	DIN A3+
7106328900	200 sheets	328 x 900 mm Banner 1
7106215120	200 sheets	215 x 1200 mm Banner 2
7106328120	200 sheets	328 x 1200 mm Banner 3



32,50 €
46,90 €
65,00 €
72,50 €
77,30 €
77,30 €
82,90 €
153,50 €
134,20 €
204,70 €

- PROOFING SOLUTIONS
- PHOTO SOLUTIONS
- PRODUCTION SOLUTIONS

EFI Laser Paper Glossy 205GL

(205 g/m²)

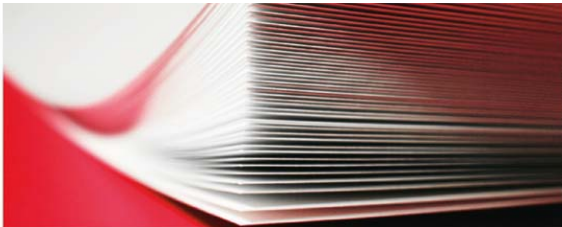
Glossy paper, heavy-weight, for high color fidelity laser printing. Suitable for single-side printing.

7108210297	100 sheets	DIN A4
7108241340	100 sheets	SUPER A4
7108297420	100 sheets	DIN A3
7108305457	100 sheets	A3 ÜF
7108320450	100 sheets	SRA 3
7108328453	100 sheets	A3 Nobi
7108330483	100 sheets	DIN A3+
7108328900	100 sheets	328 x 900 mm Banner 1
7108215120	100 sheets	215 x 1200 mm Banner 2
7108328120	100 sheets	328 x 1200 mm Banner 3



24,90 €
36,10 €
49,80 €
55,80 €
57,60 €
59,50 €
63,80 €
118,10 €
103,20 €
157,50 €

- PROOFING SOLUTIONS
- PHOTO SOLUTIONS
- PRODUCTION SOLUTIONS



Inkjet & Laser Paper
PROOF, PHOTO & PRODUCTION MEDIA

Water based inks	Full/Eco/Mid-Solvent inks	UV-curable inks	Laser printers	B1 certified	Outdoor-Applications
------------------	---------------------------	-----------------	----------------	--------------	----------------------



Printing media for colour laser printers and laser copiers

NEW

part no.

unit

size

core

recommended for

Application and icc-supported profiles with the following product segments:

EFI Laser Photo Paper 250 SatinRaster

(250 g/m²)



Heavy satin paper for duplex printing with a silk screen pattern. Excellent printing results for photo and album applications, real photoquality !

The mark of responsible forestry

6747210297	100 sheets	DIN A4
6747210298	500 sheets	DIN A4
6747241340	100 sheets	Super A4
6747241341	500 sheets	Super A4
6747297420	100 sheets	DIN A3
6747297421	500 sheets	DIN A3
6747320450	100 sheets	SRA 3
6747320451	500 sheets	SRA 3
6747328453	100 sheets	A3Nobi
6747328454	500 sheets	A3Nobi

31,20 €
140,40 €
41,00 €
184,50 €
62,40 €
280,80 €
72,00 €
324,00 €
74,30 €
334,30 €

- PROOFING SOLUTIONS
- PHOTO SOLUTIONS
- PRODUCTION SOLUTIONS

Further EFI printing media for Proof applications can be found in the following product segments:

PHOTO SOLUTIONS

PRODUCTION SOLUTIONS



Inkjet & Laser Paper

PROOF, PHOTO & PRODUCTION MEDIA

Water based inks	Full/Eco/Mild-Solvent inks	UV-curable inks	Laser printers	B1 certified	Outdoor-Applications
------------------	----------------------------	-----------------	----------------	--------------	----------------------



Best/EFI Classics - end of life (subject to prior sale)

NEW

part no.

unit

size

core

recommended for

Application and icc-supported profiles with the following product segments:

EFI Proof Paper 9150 Semimatt

(150 g/m²)



The EFI Proof Paper 9150 semimatt for use with both pigmented and dye-based ink, was specially developed for the offset proofing market. It is an ideal product for all applications with color accurate demand. The very low content of optical brighteners eliminates an important source of metamerism effects. Due to its neutral paper shade (LAB-Value: 95.59; 0.6; -2.3) this paper is highly recommended to simulate all common reference papers of the offset printing industry. In most cases the simulation of the paper white becomes redundant due to the adjusted coloration of the paper. This media is compatible for proof creation according to ISO 12647-7.

(By using the K3 inks, the gamut of the ISO coated V2 cannot be covered in the magenta-red-area. For this purpose we suggest the the FograCert EFI Offset Proof Paper 9100/9200 Semimatt or the EFI grades 4245 or 6225XF Semimatt. Please note: The paper types ISO web-coated (PT3) and ISO uncoated (PT4) can be covered in combination with the K3 inks.)

***) All roll units are supplied with each two adapters 3" to 2" core.**

*****) Suitable e. g. for HP DesignJet 70 and 90 Series**

6096210297	100 sheets	DIN A4	
6096241340	100 sheets	SUPER A4	
6096297420	100 sheets	DIN A3	
6096330483	100 sheets	DIN A3+	
6096329558	100 sheets	A3++	
6096420594	100 sheets	DIN A2	
6096594841	100 sheets	DIN A1	
6096254030	roll	25,4 cm x 30 m (10")	2"
6096329010	roll	32,9 cm x 10 m (13")	2"
6096329030	roll	32,9 cm x 30 m (13")	2"
6096360030	roll	36,0 cm x 30 m (14,17")	2"
6096420010	roll	42,0 cm x 10 m (16,5")	1"
6096432031	roll	43,2 cm x 30 m (17")	3**)
6096450030	roll	45,0 cm x 30 m (17,7")	2"
6096457025	roll	45,7 cm x 25 m (18")	2" ***)
6096508030	roll	50,8 cm x 30 m (20")	2"
6096610031	roll	61,0 cm x 30 m (24")	3**)
6096914031	roll	91,4 cm x 30 m (36")	3**)
6096107030	roll	106,7 cm x 30 m (42")	2"
6096112031	roll	111,8 cm x 30 m (44")	3**)
6096127030	roll	127,0 cm x 30 m (50")	2"
6096135030	roll	135,0 cm x 30 m (53,125")	3**)
6096137030	roll	137,0 cm x 30 m (54")	2"
6096152030	roll	152,0 cm x 30 m (60")	2"
6096182030	roll	182,8 cm x 30 m (72")	2"

6096999998	5 sheets	DIN A3+	
6096999997	Sample	43,2 cm x 5 m (17")	3**)



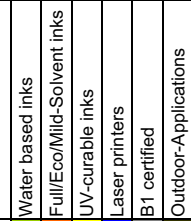
63,60 €
87,20 €
127,20 €
163,00 €
190,20 €
254,40 €
508,80 €
75,40 €
40,90 €
97,30 €
106,60 €
70,80 €
128,20 €
140,30 €
113,70 €
150,70 €
180,40 €
269,60 €
314,70 €
330,10 €
374,20 €
404,90 €
404,90 €
449,00 €
539,20 €

- PROOFING SOLUTIONS
- PHOTO SOLUTIONS
- PRODUCTION SOLUTIONS



Inkjet & Laser Paper

PROOF, PHOTO & PRODUCTION MEDIA



Best/EFI Classics - end of life (subject to prior sale)

NEW

part no.

unit

size

core

recommended for

Application and icc-supported profiles with the following product segments:

Best Proof Paper 5150 Glossy

(150 g/m²)

Glossy coated paper, extremely short drying time, wipefast, suitable for the Proof segment and for other applications with high color fidelity.

***) All roll units are supplied with each two adapters 3" to 2" core.**

6065329010	roll	32,9 cm x 10 m (13")	2"
6065360030	roll	36,0 cm x 30 m (14,17")	2"
6065610031	roll	61,0 cm x 30 m (24")	2"
6065914031	roll	91,4 cm x 30 m (36")	2"
6065107030	roll	107,0 cm x 30 m (42")	2"
6065112031	roll	111,8 cm x 30 m (44")	2"
6065127030	roll	127,0 cm x 30 m (50")	2"
6065135030	roll	135,0 cm x 30 m (53 1/8")	3" *)



27,90 €
65,40 €
94,00 €
140,00 €
163,00 €
170,00 €
193,00 €
205,00 €

- PROOFING SOLUTIONS
- PHOTO SOLUTIONS
- PRODUCTION SOLUTIONS

6065610030	roll	61,0 cm x 5 m (24")	2"
------------	------	---------------------	----

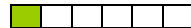
9,00 €

EFI Proof Paper 5180 Heavy-Gloss

(180 g/m²)

Heavy weight glossy paper, extremely short drying time, wipefast, suitable for the Proof segment and for other applications with high color fidelity.

6067329010	roll	32,9 cm x 10 m (13")	2"
6067360020	roll	36,0 cm x 20 m (14,17")	2"
6067610020	roll	61,0 cm x 20 m (24")	2"
6067610022	roll	61,0 cm x 20 m (24")	3"
6067914020	roll	91,4 cm x 20 m (36")	2"
6067914022	roll	91,4 cm x 20 m (36")	3"
6067107020	roll	106,7 cm x 20 m (42")	2"
6067112020	roll	111,8 cm x 20 m (44")	2"
6067112022	roll	111,8 cm x 20 m (44")	3"
6067127020	roll	127,0 cm x 20 m (50")	3"
6067135020	roll	135,0 cm x 20 m (53,125")	3"



35,00 €
56,00 €
80,00 €
80,00 €
120,00 €
120,00 €
141,00 €
147,00 €
147,00 €
167,00 €
178,00 €

- PROOFING SOLUTIONS
- PHOTO SOLUTIONS
- PRODUCTION SOLUTIONS

6086999999	Sample	61,0 cm x 5 m (24")	2"
------------	---------------	---------------------	----

17,00 €



Inkjet & Laser Paper

PROOF, PHOTO & PRODUCTION MEDIA

Water based inks	Full/Eco/Mild-Solvent inks	UV-curable inks	Laser printers	B1 certified	Outdoor-Applications
------------------	----------------------------	-----------------	----------------	--------------	----------------------



Best/EFI Classics - end of life (subject to prior sale)

NEW

part no.

unit

size

core

recommended for

Application and icc-supported profiles with the following product segments:

EFI Photo Paper 1250 Semimatt

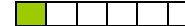
(250 g/m²)



Universal heavy weight semimatt photopaper, PE microporous coating, especially suitable for photorealistic prints and other applications.

***) All roll units are supplied with each two adapters 3" to 2" core.**

6520210297	50 sheets	DIN A4		
6520241340	50 sheets	SUPER A4		
6520297420	50 sheets	DIN A3		
6520330483	50 sheets	DIN A3+		
6520420594	50 sheets	DIN A2		
6520254025	roll	25,4 cm x 25 m (10")	2"	
6520329010	roll	32,9 cm x 10 m (13")	2"	
6520329025	roll	32,9 cm x 25 m (13")	2"	
6520360025	roll	36,0 cm x 25 m (14,17")	2"	
6520432026	roll	43,2 cm x 25 m (17")	3" *)	
6520999998	Sample	43,2 cm x 5 m (17")	3" *)	



41,00 €
60,50 €
82,00 €
111,80 €
164,00 €
76,40 €
61,40 €
102,40 €
108,70 €
130,20 €

- PHOTO SOLUTIONS
- PROOFING SOLUTIONS
- PRODUCTION SOLUTIONS

Best Fine Art Gallery Board

(330 g/m²)

Very heavy, acid-free FineArt Paper, smoothly structured for pictures with high artistic demand

6307210297	50 sheets	DIN A4		
6307297420	50 sheets	DIN A3		
6307330483	50 sheets	DIN A3+		
6307420594	50 sheets	DIN A2		
6307594841	20 sheets	DIN A1		
6307841189	20 sheets	DIN A0		



49,00 €
98,00 €
149,00 €
196,00 €
179,00 €
358,00 €

- PROOFING SOLUTIONS
- PHOTO SOLUTIONS
- PRODUCTION SOLUTIONS



Inkjet & Laser Paper
PROOF, PHOTO & PRODUCTION MEDIA

Water based inks	Full/Eco/Mild-Solvent inks	UV-curable inks	Laser printers	B1 certified	Outdoor-Applications
------------------	----------------------------	-----------------	----------------	--------------	----------------------



Best/EFI Classics - end of life (subject to prior sale)

NEW

part no.

unit

size

core

recommended for

Application and icc-supported profiles with the following product segments:

Best Fine Art Water Color Paper

(230 g/m²)

For artistic reproductions with high color fidelity.

***) All roll units are supplied with each two adapters 3" to 2" core.**

6303210297	50 sheets	DIN A4
6303297420	50 sheets	DIN A3
6303330483	50 sheets	DIN A3+
6303420594	50 sheets	DIN A2

<input checked="" type="checkbox"/>	<input type="checkbox"/>	<input type="checkbox"/>	<input type="checkbox"/>	<input type="checkbox"/>
-------------------------------------	--------------------------	--------------------------	--------------------------	--------------------------

39,00 €
78,00 €
99,00 €
156,00 €

- PROOFING SOLUTIONS
- PHOTO SOLUTIONS
- PRODUCTION SOLUTIONS

EFI Proof Paper 8180 Semiglossy

(180 g/m²)



Universal semi gloss paper, PE microporous coating, for proofs with high color fidelity and further applications. This paper is characterised by an extremely wide colour gamut.

*****) Suitable e. g. for HP DesignJet 70 and 90 Series**

9511210297	100 sheets	DIN A4		
9511241340	100 sheets	Super A4		
9511297420	100 sheets	DIN A3		
9511330483	100 sheets	DIN A3+		
9511329010	roll	32,9 cm x 10 m (13")	2"	
9511329025	roll	32,9 cm x 25 m (13")	2"	
9511360025	roll	36,0 cm x 25 m (14,17")	2"	
9511610025	roll	61,0 cm x 25 m (24")	2"	
9511999997	Sample	36,0 cm x 5 m (14,17")	2"	

<input checked="" type="checkbox"/>	<input type="checkbox"/>	<input type="checkbox"/>	<input type="checkbox"/>	<input type="checkbox"/>
-------------------------------------	--------------------------	--------------------------	--------------------------	--------------------------

75,70 €
100,60 €
151,50 €
193,80 €
21,90 €
35,90 €
39,90 €
79,00 €

- PROOFING SOLUTIONS
- PHOTO SOLUTIONS
- PRODUCTION SOLUTIONS



Inkjet & Laser Paper
PROOF, PHOTO & PRODUCTION MEDIA

Water based inks	Full/Eco/Mild-Solvent inks	UV-curable inks	Laser printers	B1 certified	Outdoor-Applications
------------------	----------------------------	-----------------	----------------	--------------	----------------------



Best/EFI Classics - end of life (subject to prior sale)

NEW

part no.

unit

size

core

recommended for

Application and icc-supported profiles with the following product segments:

EFI Proof Premium Paper 8260 Semiglossy

(260 g/m²)



Premium Proof paper, semiglossy, wipe fast, very fast drying and for universal use. The outstanding color gamut of this especially for offset printing developed paper is compatible to the paper types classes 1 and 2 of the ISO 12647-2. The paper white is close to the isocoated value, and with it's high L-value you can easily do a paper white simulation. The LAB values are 96.3; -0.1; -4.3, and the opacity is 98 %. Furthermore this Premium Proof paper has a PE microporous coating and a very good flatness, even when using rolls.

***) All roll units are supplied with each two adapters 3" to 2" core.**

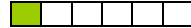
****) Suitable e. g. for HP 120/130 series**

*****) Suitable e. g. for HP DesignJet 70 and 90 Series**

6086210297	100 sheets	DIN A4
6086254031	roll	25,4 cm x 30 m (10")
6086329010	roll	32,9 cm x 10 m (13")

3"	*)
2"	

39,00 €
43,30 €
25,50 €



- PROOFING SOLUTIONS
- PHOTO SOLUTIONS
- PRODUCTION SOLUTIONS



Inkjet & Laser Paper
PROOF, PHOTO & PRODUCTION MEDIA

Water based inks	Full/Eco/Mild-Solvent inks	UV-curable inks	Laser printers	B1 certified	Outdoor-Applications
------------------	----------------------------	-----------------	----------------	--------------	----------------------



Best/EFI Classics - end of life (subject to prior sale)

NEW

part no.

unit

size

core

recommended for

Application and icc-supported profiles with the following product segments:

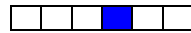
EFI Laser Paper DUO-Semimatt 105SM

(105 g/sqm)



Semimatt paper, for high color fidelity laser printing. Appearance similar to offset production paper (LAB-value: 93, 1, -1.7). Lower toner consumption enables faster running. Optimal toner adhesion allows folding. Suitable for duplex printing.

7104210297	200 sheets	DIN A4
7104241340	200 sheets	SUPER A4
7104297420	200 sheets	DIN A3
7104305457	200 sheets	A3 ÜF
7104320450	200 sheets	SRA 3
7104328453	200 sheets	SUPER A3
7104328900	200 sheets	328 x 900 mm Banner 1



13,50 €
18,70 €
27,00 €
33,90 €
34,90 €
33,80 €
73,90 €

- PROOFING SOLUTIONS
- PHOTO SOLUTIONS
- PRODUCTION SOLUTIONS



Inkjet & Laser Paper

PROOF, PHOTO & PRODUCTION MEDIA

Water based inks	Full/Eco/Mild-Solvent inks	UV-curable inks	Laser printers	B1 certified	Outdoor-Applications
------------------	----------------------------	-----------------	----------------	--------------	----------------------



Best/EFI Classics - end of life (subject to prior sale)

NEW

part no.

unit

size

core

recommended for

Application and icc-supported profiles with the following product segments:

EFI Proof Paper 9190 Matt

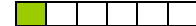
(190 g/m²)



Heavy matt coated, tailor made for proofing applications. For affordable prints with high color fidelity. The special coloring and the high L-value make this paper especially suitable for the simulation of matt printing media.

***) All roll units are supplied with each two adapters 3" to 2" core.**

*****) Suitable e. g. for HP DesignJet 70 and 90 Series**



6517210297	100 sheets	DIN A4		22,40 €
6517241340	100 sheets	SUPER A4		29,50 €
6517297420	100 sheets	DIN A3		44,80 €
6517330483	100 sheets	DIN A3+		57,20 €
6517329558	100 sheets	A3++		66,00 €
6517420594	100 sheets	DIN A2		89,60 €
6517594841	100 sheets	DIN A1		179,20 €
6517254030	roll	25,4 cm x 30 m (10")	2"	21,20 €
6517329010	roll	32,9 cm x 10 m (13")	2"	17,40 €
6517360030	roll	36,0 cm x 30 m (14,17")	2"	30,00 €
6517432031	roll	43,2 cm x 30 m (17")	3**	35,90 €
6517457025	roll	45,7 cm x 25 m (18")	2" ***	39,90 €
6517508030	roll	50,8 cm x 30 m (20")	2"	42,30 €
6517610031	roll	61,0 cm x 30 m (24")	3**	50,80 €
6517914031	roll	91,4 cm x 30 m (36")	3**	76,00 €
6517107030	roll	106,7 cm x 30 m (42")	2"	88,70 €
6517112031	roll	111,8 cm x 30 m (44")	3**	92,90 €
6517127030	roll	127,0 cm x 30 m (50")	2"	105,50 €
6517135030	roll	135,0 cm x 30 m (53,125")	3**	112,20 €
6517162031	roll	162,6 cm x 30 m (64")	3**	133,20 €
6517999998	Sample	43,2 cm x 5 m (17")	3**	6,70 €

- PROOFING SOLUTIONS
- PHOTO SOLUTIONS
- PRODUCTION SOLUTIONS



Inkjet & Laser Paper
PROOF, PHOTO & PRODUCTION MEDIA

Water based inks	Full/Eco/Mild-Solvent inks	UV-curable inks	Laser printers	B1 certified	Outdoor-Applications
------------------	----------------------------	-----------------	----------------	--------------	----------------------



Best/EFI Classics - end of life (subject to prior sale)

NEW

part no.

unit

size

core

recommended for

Application and icc-supported profiles with the following product segments:

EFI Budget Proof Paper 3170 Semimatt

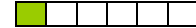
(165 g/m²)



The EFI Budget Proof Paper 3170 Semimatt is the ideal product for all applications with color accurate demand. It is featured by a wide color

(By using the K3 inks the gamut of the ISO coated V2 cannot be covered in the magenta-red-area. For this purpose we suggest the FograCert EFI Gravure Proof Paper 4245 Semimatt, EFI CertProof 6225XF or EFI Offset Proof Paper 9100/9200 Semimatt. Please note: The paper types ISO webcoated (PT3) and ISO uncoated (PT4) can be covered in combination with the K3 inks.)

***) All roll units are supplied with each two adapters 3" to 2" core.**



6066210297	100 sheets	DIN A4			
6066241340	100 sheets	SUPER A4			
6066329010	roll	32,9 cm x 10 m (13")	2"		

31,10 €
40,70 €
24,50 €

PROOFING SOLUTIONS

PHOTO SOLUTIONS

6066999997	Sample	43,2 cm x 5 m (17")	3**)		
------------	---------------	---------------------	------	--	--

9,80 €

PRODUCTION SOLUTIONS



Inkjet & Laser Paper

PROOF, PHOTO & PRODUCTION MEDIA

Water based inks	Full/Eco/Mid-Solvent inks	UV-curable inks	Laser printers	B1 certified	Outdoor-Applications
------------------	---------------------------	-----------------	----------------	--------------	----------------------



Best/EFI Classics - end of life (subject to prior sale)

NEW

part no.

unit

size

core

recommended for

Application and icc-supported profiles with the following product segments:

EFI Budget Proof Paper 3130 Semimatt

(130 g/sqm)



The EFI Budget Proof Paper 3130 Semimatt is the ideal product for all applications with color accurate demand. It is featured by a wide color gamut and a very short drying time. This competitively-priced media is compatible for proof creation according to ISO 12647-7.

6063241340	100 sheets	SUPER A4
6063330483	100 sheets	DIN A3+
6063420594	100 sheets	DIN A2
6063329031	Rolle	32,9 x 30 m (13")

3" *)

33,60 €
65,30 €
102,20 €
44,00 €

- PROOFING SOLUTIONS
- PHOTO SOLUTIONS
- PRODUCTION SOLUTIONS

EFI Production Paper 1160 PET-Film

(160 g/m²)

Matt coated film, water resistant with pigmented inks, suitable for laminating, bidirectionally tear proof, suitable for grommeting, especially for photo and production applications.

6711210297	50 sheets	DIN A4
6711241340	50 sheets	SUPER A4
6711297420	50 sheets	DIN A3
6711330483	50 sheets	DIN A3+
6711420594	50 sheets	DIN A2
6711594841	50 sheets	DIN A1
6711254020	roll	25,4 cm x 20 m (10")
6711329010	roll	32,9 cm x 10 m (13")
6711432020	roll	43,2 cm x 20 m (17")
6711508020	roll	50,8 cm x 20 m (20")
6711610020	roll	61,0 cm x 20 m (24")

2"
2"
2"
2"
2"

45,80 €
60,10 €
91,60 €
116,70 €
183,20 €
366,40 €
62,10 €
40,20 €
105,50 €
124,00 €
148,90 €

- PROOFING SOLUTIONS
- PHOTO SOLUTIONS
- PRODUCTION SOLUTIONS

*) All roll units are supplied with each two adapters 3" to 2" core.

6711999998 **Sample**

43,2 cm x 5 m (17") 3" *)

35,90 €

Further EFI printing media for Production applications can be found in the following product segments:
PHOTO SOLUTIONS
PRODUCTION SOLUTIONS

Product specifications and prices subject to change without prior notice.



Tecco GmbH

Buchholzstraße 79 - 51469 Bergisch Gladbach - Telefon: +49-(0)2202-2924-0 - Fax: +49-(0)2202-2924-99

e-Mail: contact@tecco.de

www.tecco.de

January 2011

Sizes: *Photo 10x15: 102 x 152 mm*
US-executive: 184 x 267 mm
DIN A4: 210 x 297 mm
US-letter: 216 x 280 mm
US-legal: 216 x 356 mm
SUPER A4: 241 x 340 mm
US-tabloid: 280 x 432 mm
DIN A3: 297 x 420 mm
A3 ÜF: 305 x 457 mm
SRA 3: 320 x 450 mm
A3 Nobi: 328 x 453 mm
DIN A3+: 330 x 483 mm
A3++: 329 x 558 mm
DIN A2: 420 x 594 mm
DIN A2+: 480 x 628 mm
DIN A1: 594 x 841 mm
DIN A1+: 625 x 914 mm
DIN A0: 841 x 1189 mm
DIN A0++: 914 x 1250 mm
Banner 1: 328 x 900 mm
Banner 2: 215 x 1200 mm
Banner 3: 328 x 1200 mm
Banner 4: 297 x 900 mm
Banner 5: 215 x 900 mm
Banner 6: 297 x 840 mm
Banner 7: 297 x 1200 mm
Banner 8: 320 x 1200 mm

