

efi Fiery® eXpress



Easy and accurate photo,
proof, and production printing

Powerful color management and RIP at a fraction of the cost

Whether you're producing large format prints, creating brilliant photos, or generating accurate proofs, quality demands are high. As a creative director, print buyer, or designer, you need proofs, poster prints, fine art or photos to be spot-on. EFI™ Fiery® eXpress offers a professional toolset at a fraction of the cost, helping you deliver accurate, high-quality printouts in a cost-effective manner.

Easy and helpful from the moment you open the box

The Fiery eXpress solution is designed to be easy to use for experts and novices alike. What sounds so powerful can be operated incredibly easily, thanks to the setup wizard, color management presets, control wedges, and spot color simulations, all of which are ready-to-use right after the installation of the product.

You have the ability to quickly create a backup and restore application settings. To ensure supported printers and standards are the very latest, Fiery eXpress will let you know when an update is available.

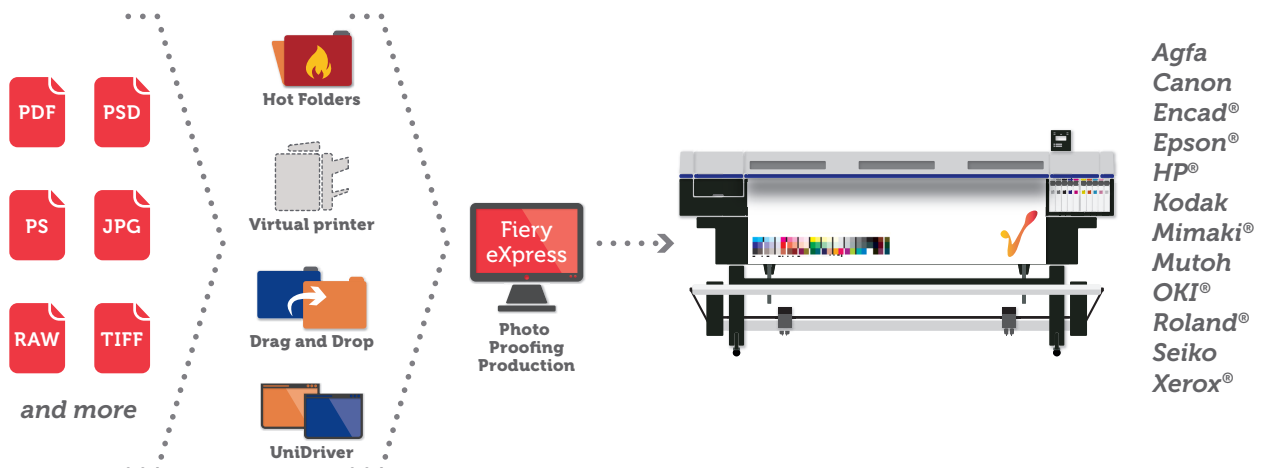
Extensive functionality built on industry standards

Fiery eXpress includes more than 2,500 individually created printer linearizations and ICC profiles right out of the box. The software supports a continually updated list of close to 400 printers from Agfa, Canon, Encad®, Epson®, HP®, Kodak, Mimaki®, Mutoh, OKI®, Roland®, Seiko, and Xerox®.

Fiery eXpress is designed to support industry standards such as ICC, PDF/X, ISO 12647-7 and -8, SWOP, and GRACoL. Native PDF support (APPE) and the support of the Adobe PostScript 3 Engine ensure that PDF, PS, and EPS files are RIPped correctly.

It's easy to produce optimal spot color simulations with the one-click spot color customization tools. Support for PANTONE®, PANTONE Plus®, DIC, HKS®, and Toyo spot color libraries give you even more color choices.

Fiery eXpress supports all relevant file formats, including RAW, PSD, TIFF, JPEG, JPEG2000, ImageEPS, ImagePDF, EPS, PS, PDF, and the EFI Remote Proofing Format (RPF). It's cross-platform, running on Mac OS X and Microsoft® Windows®.



Powerful tools for production

A comprehensive set of production tools to scale, mirror, crop, rotate, align, add crop marks, and more can be operated quickly and easily, accommodating less experienced users. Automated and manual step and repeat, collection, or nesting functionality improves media utilization and thus lessens waste.

Do last-minute color adjustments or edit spot colors for the desired final result. The job-based optimization feature allows sub-optimal paper profiles to be easily adjusted to improve output quality.



Color manipulations that guarantee the desired result

“EFI Fiery eXpress works flawlessly alongside our existing workflow, enabling us to quickly produce highly accurate proofs for our vast range of lithographic work.”

DANNY BALDWIN, PRINT SALES DIRECTOR
BOSS DIRECT LTD, UK



Output verification to ensure spot-on color results

Accurate proofs made easy

Digital media wedges are the tool for precise and predictable quality control during proof and print. Fiery eXpress supports all major control strips including Ugra/Fogra, Idealliance, and Japan Color.

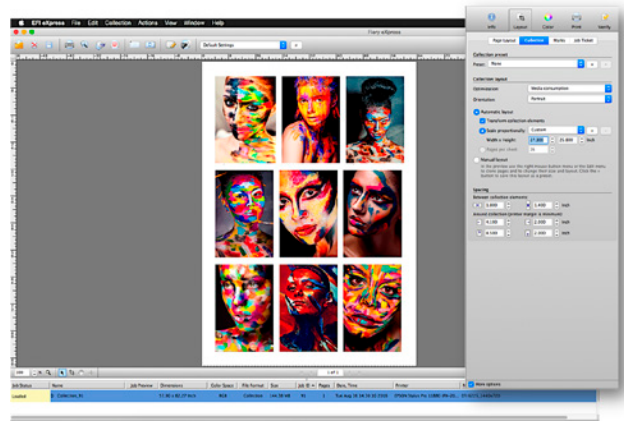
Fiery eXpress includes wizard-based certification to verify proofs and prints according to ISO 12647-7/8 and G7 standards using spectrophotometers such as the EFI ES-2000.

“As a medium-sized ad agency, we needed to find a simple and functional solution. Fiery eXpress has completely fulfilled our expectations and has helped us to successfully implement the new Fogra standards.”

RAINER BRIEL, TECHNICAL SUPERVISOR
COLORMATCH PREPRESS & IT SOLUTIONS GMBH, GERMANY

Ensure perfect photo prints

The solution automatically configures photo collections (single- and multi-image templates), plus contact sheets to save you time and media for image evaluation and approval. It provides image management tools to easily convert to grayscale, honor incoming RGB profiles, and it fully supports EXIF data. Moreover, the solution provides color and printing presets with an intuitive and simpler “everyday work mode” for faster processing of common tasks and higher productivity. The included EFI Unidriver allows multiple users to remotely control RIP settings as easily as using a simple printer driver.



Create contact sheets in just a few clicks

“I used to send jobs via my Windows print driver, which regularly failed on larger jobs due to the amount of data. With EFI Fiery eXpress, this problem was solved immediately. Wide format jobs are now processed quickly, accurately, and easily.”

BRIAN FLOOK, HUNTINGTON BEACH UNION HIGH SCHOOL DISTRICT
REPROGRAPHICS TECHNICIAN

EFI fuels success.

We develop breakthrough technologies for the manufacturing of signage, packaging, textiles, ceramic tiles, and personalized documents, with a wide range of printers, inks, digital front ends, and a comprehensive business and production workflow suite that transforms and streamlines the entire production process, increasing your competitiveness and boosting productivity. Visit www.efi.com or call 650-357-3500 for more information.



Nothing herein should be construed as a warranty in addition to the express warranty statement provided with EFI products and services.

The APPS logo, AutoCal, Auto-Count, Balance, BESTColor, BioVu, BioWare, ColorPASS, Colorproof, ColorWise, Command WorkStation, CopyNet, Cretachrom, Cretaprint, the Cretaprint logo, Cretaprinter, Cretaroller, Digital StoreFront, DirectSmile, DocBuilder, DocBuilder Pro, DockNet, DocStream, DSFdesign Studio, Dynamic Wedge, EDOX, EFI, the EFI logo, Electronics For Imaging, Entrac, EPCount, EPPPhoto, EPRegister, EPStatus, Estimate, ExpressPay, FabriVU, Fast-4, Fiery, the Fiery logo, Fiery Driven, the Fiery Driven logo, Fiery JobFlow, Fiery JobMaster, Fiery Link, Fiery Navigator, Fiery Prints, the Fiery Prints logo, Fiery Spark, FreeForm, Hagen, Inkintensity, Inkware, Jetrion, the Jetrion logo, LapNet, Logic, Metrix, MicroPress, MiniNet, Monarch, OneFlow, Pace, Pecas, Pecas Vision, PhotoXposure, PressVu, Printcafe, PrinterSite, PrintFlow, PrintMe, the PrintMe logo, PrintSmith, PrintSmith Site, PrintStream, Print to Win, Prograph, PSI, PSI Flexo, Radius, Remoteproof, RIPChips, RIP-While-Print, Screenproof, SendMe, Sincolor, Splash, Spot-On, TrackNet, UltraPress, UltraTex, UltraVu, UV Series 50, VisualCal, VUTEK, the VUTEK logo, and WebTools are trademarks of Electronics For Imaging, Inc. and/or its wholly owned subsidiaries in the U.S. and/or certain other countries.

All other terms and product names may be trademarks or registered trademarks of their respective owners, and are hereby acknowledged.