

# STEP-BY-STEP INSTRUCTIONS I

## INDESIGN: PRINT SETTINGS FOR PANTONE PLUS COLOURS

### InDesign print settings for your Epson photo printer

Before you start, ensure you are using the best and most up-to-date version of everything (firmware, printer drivers etc.) and calibrate your printer. Create your file with PANTONE PLUS colours.

Please follow the steps below and select the highlighted print settings for the best possible print results (You can leave all other settings unchanged or select individual ones as required):

**Color Settings**

Unsyncronized: Your Creative Suite applications are not synchronized for consistent color. To synchronize, select Suite Color Settings in Bridge.

Settings: Custom  
 Advanced Mode

**1** Working Spaces  
 RGB: Adobe RGB (1998)  
 CMYK: ISO Coated v2 (ECI)

Color Management Policies  
 RGB: Off  
 CMYK: Off

Profile Mismatches:  Ask When Opening  
 Ask When Pasting

Missing Profiles:  Ask When Opening

**2** Conversion Options  
 Engine: Adobe (ACE)  
 Intent: Absolute Colorimetric  
 Use Black Point Compensation

Description:  
Position the pointer over a heading to view a description.

**New Color Swatch**

Swatch Name: PANTONE 100 C  
 Name with Color Value

**3** Color Type: Spot  
 Color Mode: RGB

Red: 241  
 Green: 227  
 Blue: 101

**Print**

Print Preset: [Custom]  
**4** Printer: Your Epson photo printer  
 PPD: [ ]

Color Management  
 Print  
 Document (Profile: Adobe RGB (1998))  
 Proof (Profile: ISO Coated v2 (ECI))

Options  
**5** Color Handling: Let InDesign Determine Colours  
 Printer Profile: Printer + Premium Semimatte Photo Paper (260)  
 Output Color: Composite RGB  
 Preserve RGB Numbers  
 Simulate Paper Color

Description  
Position the pointer over a heading to view a description.

Save Preset... Page Setup... Print Cancel

**Current Settings**

Main  
 Media Type: Premium Semimatte Photo Paper (260)  
**6** Print Quality Level: LEVEL 5  
 Print Quality: SuperPhoto - 2880x1440dpi  
 High Speed: Off  
 Color: Off  
 Source: Roll Paper  
 Auto Cut: Normal Cut  
 Auto Rotate: Off  
 Page Layout: Portrait  
 Orientation: Portrait  
 Rotate 180°: Off  
 Mirror Image: Off  
 Copies: 1  
 Size: Pantone  
 Job Settings: Off  
 Color Correction: Off (No Color Adjustment)  
 Always show Current Settings.

**Properties of your Epson photo printer**

Select Setting: Current Settings  
 Save/Del...

Media Settings  
**6** Media Type: Premium Semimatte Photo Paper (260)  
 Color: Color  
**7** Print Quality: Quality Options  
 Mode: Automatic Custom  
**8** Off (No Color Adjustment)  
 Advanced...

Paper Settings  
 Source: Roll Paper  
 Roll Paper Option...  
 Size: Pantone  
 User Defined...  
 Borderless

Ink Levels  
 GR LLK Y LC VLM OR MK VM LK C PK

Reset Defaults(Y) Version 6.73  
 OK Cancel Help

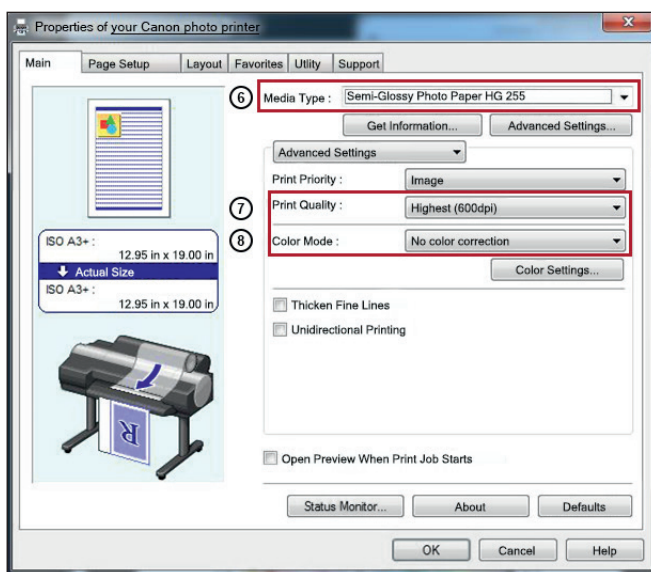
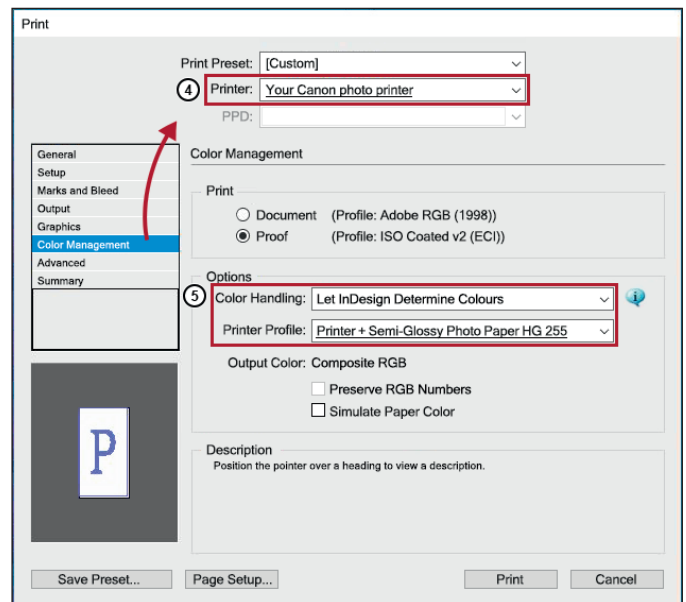
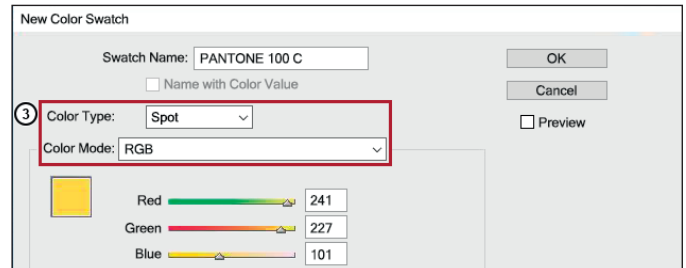
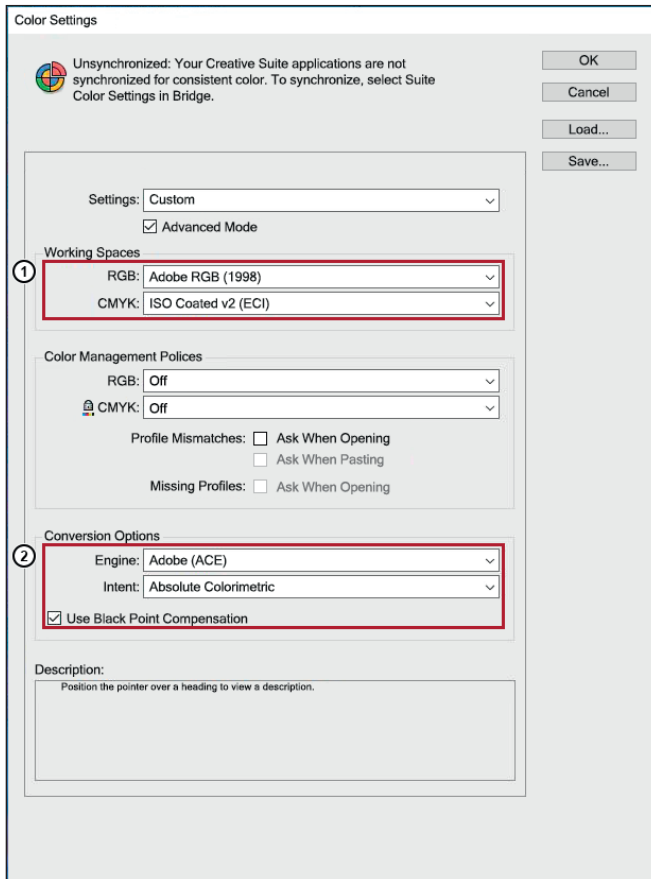
Any questions? If so, please contact your dealer for further information.

# STEP-BY-STEP INSTRUCTIONS I

## INDESIGN: PRINT SETTINGS FOR PANTONE PLUS COLOURS

### InDesign print settings for your Canon photo printer

Before you start, ensure you are using the best and most up-to-date version of everything (firmware, printer drivers etc.) and, if possible, calibrate your printer to PANTONE® VIBRANT by Felix Schoeller. Create your file with PANTONE PLUS colours. Please follow the steps below and select the highlighted print settings for the best possible print results (You can leave all other settings unchanged or select individual ones as required):



**Any questions?** If so, please contact your dealer for further information.